

Inspection - Chain Trencher Inspection

Created by	Murray Lahrs	Date	1 Feb 2023 15:12
ID	MLA-30 Off-Hire	Equipment	TB0003 Vermeer T1155

Type	Off-Hire
Date of Inspection	1 Feb 2023
Make	Vermeer
Model	T1155
Registration (Letters/Numbers Only)	27364C
Serial #	1VR22504581000505
Odometer Reading	8505
Next Service Due	8850
Project Plant Number	TB0003
MPC Number	TB0003


1. The above item has been inspected and is deemed compliant with National Safety Standards.
2. The issue of this form does not release the owner from the responsibility of due care and attention at all times.

Engine

ENGINE COOLANT LEVEL	Good
ENGINE AIR CLEANER INDICATOR	Good
ENGINE AIR PRECLEANER	Good
ENGINE OIL LEVEL	Good
PRIMARY FUEL FILTER	Good
FUEL/WATER SEPERATOR	Good
FUEL TANK & WATER SEDIMENT	Good
AIR INTAKE SYSTEM AND CHARGE COOLER	Good
ENGINE OIL LEAKS	Good
V BELTS	Good
V BELT PULLEY	Good
ALTERNATOR BRACKETS	Good
WIRING HARNESS (CHAFING)	Repair
ALL HOSES (LEAKS AND CHAFING)	Repair
AUTO GREASER	N/A
PIVOT RING	Good
ATTACHMENT LIFT CYLINDERS	Good
PIVOT RINGS (ATTACHMENT)	Good
HYD ATTACHMENT MOTORS (LEAKS)	Good
HYDRAULIC OIL LEVEL	Good
HYD HOSES (LEAKS AND CHAFING)	Repair
PUMP DRIVE GEARBOX OIL LEVEL	Good
LOOSE BOLTS	Repair
PICK HOLDERS AND PICKS	Repair
TRENCHER CHAIN TENSION	Repair
GROUND DRIVE SPROCKETS	Good
DOME LIGHT	Good
ALL SWITCHES	Good

Engine	
AIRCONDITIONING SYSTEM	Repair
OPERATOR SAFETY SEAT SWITCH	Good
ACCUMULATORS (PRE CHARGE 225-250)	Good
CYCLE CLUTCH HANDLE	Repair
LEFT TRACK GAUGE	Good
RIGHT TRACK GAUGE	Good
ATTACHMENT GAUGE	Good
RECORD FAULT CODES AND RESET	No

Safety	
3 point seat belts fitted and operational	Good
Gauges operational	Good
Reverse alarm and horn operational	Good
Fire extinguisher tagged and in date	Replace
Amber flashing light	Good
UHF and aerial fitted	Good
Isolation switch fitted	Repair
ROPS	Good
Risk Assessment and Operators Manual present in cab?	No
Remarks	<p>TB0003 - 27364C - 8505 Hrs 1VR22504581000505 - Tractor Unit 1VR23105281000105 - Chain Attachment SMA 16L1 C1 103 # 6007</p> <p>PLEASE NOTE - Machine will need a very good Weed n Seed Clean, Both Fire Extinguishers will need to be replaced, Will need Start Isolators Fitted,</p> <ul style="list-style-type: none"> -Chain has about 40% Life left in it, and by the wear on the plate bolts I would say that the No.1's are worn as well. -Clutch Cable is Broken need to be replaced -Crumber Shoe need repair on the Toe -Crumber Cylinder Needs reseal as it is leaking internal and dropping down -RHS Conveyor Motor needs a reseal kit -Some hoses are worn and rubbed will need to be replaced -Bent bottom corner of the Cab Door, Need a little straighten -Striped Boom Wedge missing bolt, Wedge needs to be replaced -Both Boom Adjustment Lock Plates are missing bolts, Predict striped thread and will need to be repaired -Bottom Boom wear Plates have little life left in them, Should be replaced. -A/C system needs service -Machine needs 8500 Hr Service , was due at 8250Hrs by the service sticker -Conveyor Belt needs to be replaced due to damage -Conveyor Fold Up stoppers need replacing -Some Oil Leaks around the Hydraulic Pumps -Cab Rear Window should be replaced due to Visibility Conditions -Cab Interior needs some repairs to bring back to a good condition

Environmental	
Is there a copy of a current 3rd party weed/seed hygiene and wash down report?	Repair
Photo of 3rd Party Weed & Seed	
	
Photo 1/2/23 15:43:37	

Additional

Additional Items Noted for Next Service/Inspection

NOTED BY SITE * Chain needs tensioning pockets needs replacing oil leak in hose

Photo/s



Photo 1/2/23 15:20:39



Photo 1/2/23 15:20:59



Photo 1/2/23 15:21:15



Photo 1/2/23 15:21:35

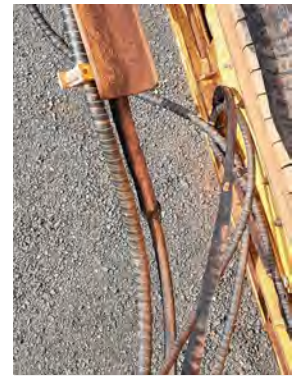


Photo 1/2/23 15:21:57



Photo 1/2/23 15:22:13



Photo 1/2/23 15:22:31



Photo 1/2/23 15:23:03



Photo 1/2/23 15:23:17



Photo 1/2/23 15:24:38



Photo 1/2/23 15:24:49

Additional



Photo 1/2/23 15:25:00



Photo 1/2/23 15:25:27



Photo 1/2/23 15:25:37



Photo 1/2/23 15:25:52



Photo 1/2/23 15:26:12



Photo 1/2/23 15:26:47



Photo 1/2/23 15:27:12



Photo 1/2/23 15:27:22



Photo 1/2/23 15:27:55



Photo 1/2/23 15:28:07



Photo 1/2/23 15:28:26



Photo 1/2/23 15:29:13



Photo 1/2/23 15:29:56



Photo 1/2/23 15:30:46



Photo 1/2/23 15:31:07



Photo 1/2/23 15:31:18



Photo 1/2/23 15:31:43



Photo 1/2/23 15:32:06



Photo 1/2/23 15:33:41



Photo 1/2/23 15:33:55



Photo 1/2/23 15:34:06



Photo 1/2/23 15:34:56



Photo 1/2/23 15:35:08



Photo 1/2/23 15:38:12



Photo 1/2/23 15:37:00



Photo 1/2/23 15:37:18



Photo 1/2/23 15:42:10



Photo 1/2/23 15:42:29



Photo 1/2/23 15:42:56



Photo 1/2/23 15:43:16



Photo 1/2/23 15:43:52



Photo 1/2/23 15:44:59



Photo 1/2/23 15:45:12



Photo 1/2/23 15:45:24



Photo 1/2/23 15:45:47



Photo 2/2/23 08:38:03

Additional



Photo 2/2/23 08:38:24

Do you believe this vehicle is of suitable standard to be used on this project?

No

Signoff

Mechanic / Competent person

Murray Lahrs

SIGNATURE

Submitted

Name
Murray Lahrs

Date
2 Feb 2023 08:44