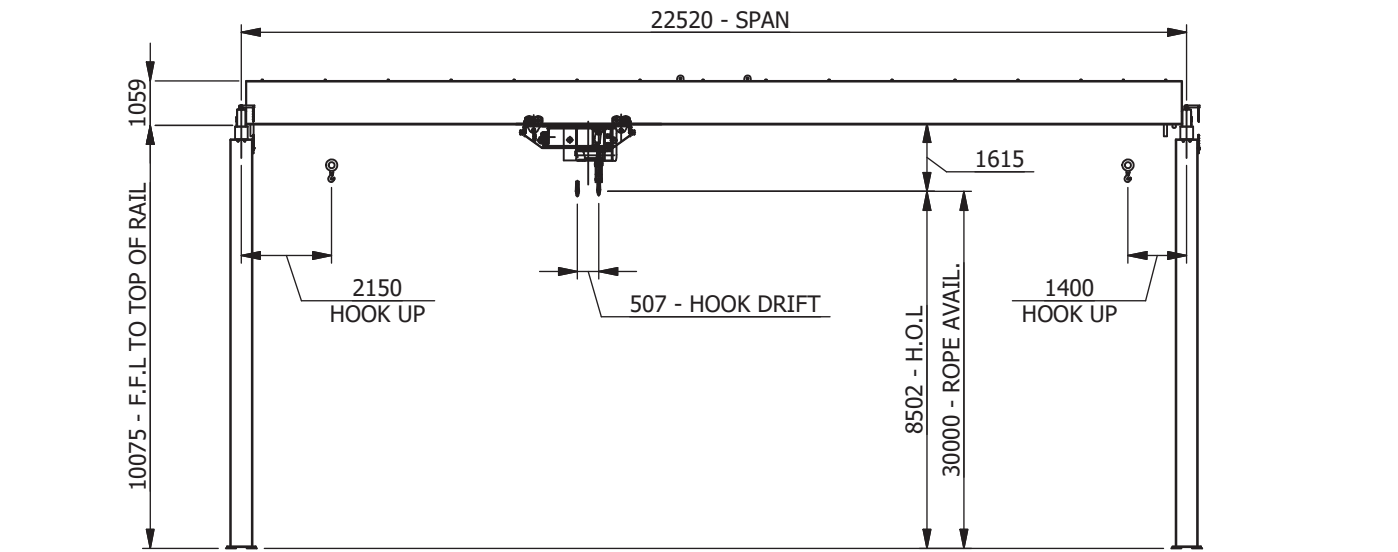
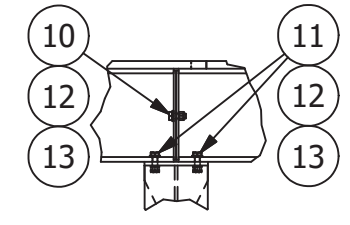


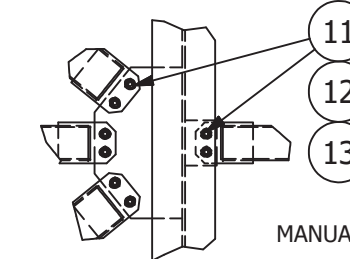
BUILDING PLAN



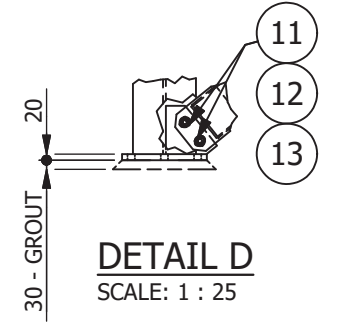
ELEVATION



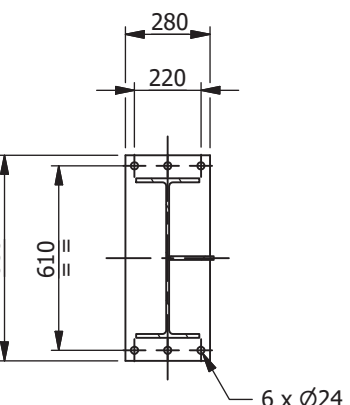
DETAIL E
SCALE: 1 : 25



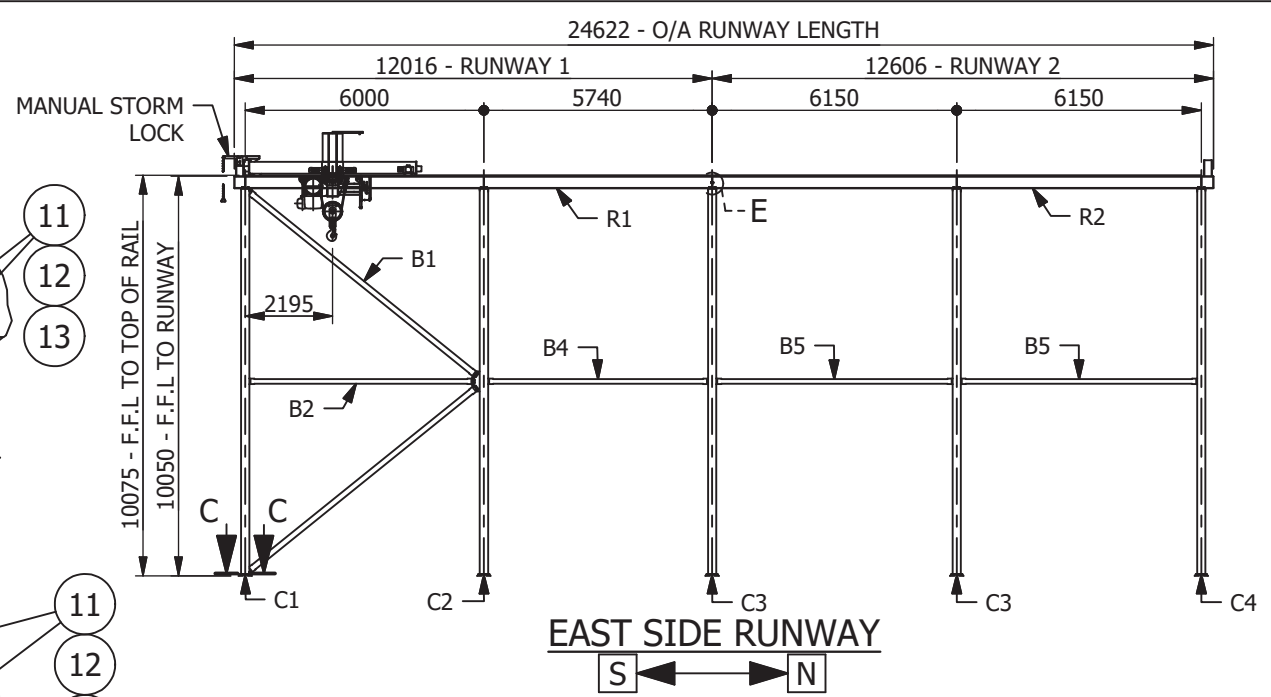
DETAIL F
SCALE: 1 : 25



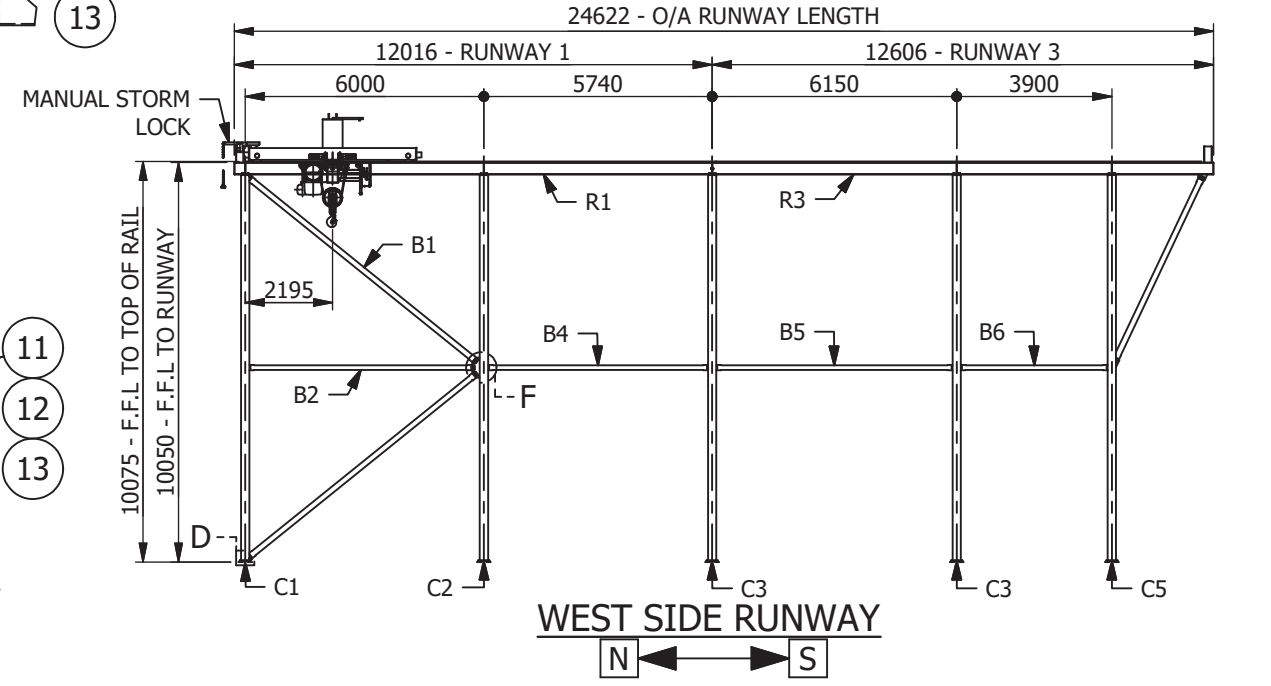
DETAIL D
SCALE: 1 : 25



SECTION C-C
SCALE: 1 : 25



EAST SIDE RUNWAY
S ← N



WEST SIDE RUNWAY
N ← S

ITEM	DESCRIPTION	NOM. SIZE	LENGTH	SPEC./SUPPLIER	DRAWING#/REF/STD	PART#	QTY	kg EA
1	RUNWAY 1				DMS-121	R1	2	
2	RUNWAY 2				DMS-122	R2	1	
3	RUNWAY 3				DMS-123	R3	1	
4	COLUMN 1				DMS-124	C1	2	
5	COLUMN 2				DMS-125	C2	2	
6	COLUMN 3				DMS-126	C3	4	
7	COLUMN 4				DMS-127	C4	1	
8	COLUMN 5				DMS-128	C5	1	
9	BRACINGS				DMS-129	VARIES	1	
10	HEX BOLT STRUCT. - GALV.	M16	45	CL 8.8	AS 1252	PURCHASED	4	0
11	HEX BOLT STRUCT. - GALV.	M16	55	CL 8.8	AS 1252	PURCHASED	92	0
12	WASHER STRUCT. - GALV.	M16		STFW	AS 1252	PURCHASED	96	0
13	HEX NUT STRUCT. - GALV.	M16		CL 8.8	AS 1252	PURCHASED	96	0

REV	DATE	DESCRIPTION	DRN	CHK	APP
D	10/06/2021	SPAN DIMENSION UPDATED	RK	DL	DL
C	29/04/2021	RUNWAY ARRANGEMENT UPDATED	RK	DL	DL
B	13/04/2021	RUNWAY LENGTH UPDATED	RK	DL	DL
A	29/04/2021	ISSUED FOR APPROVAL	RK	DL	DL

DESIGN REFERENCES

STRUCTURAL REF	28831-EDC-110
STRUCTURAL BY	AT
REGO BODY	
MECHANICAL	ABUS
ELECTRICAL	ABUS

APPROVAL FOR CONSTRUCTION


CHECKED	DL
APPROVED	DL
DATE	
SIGNED	

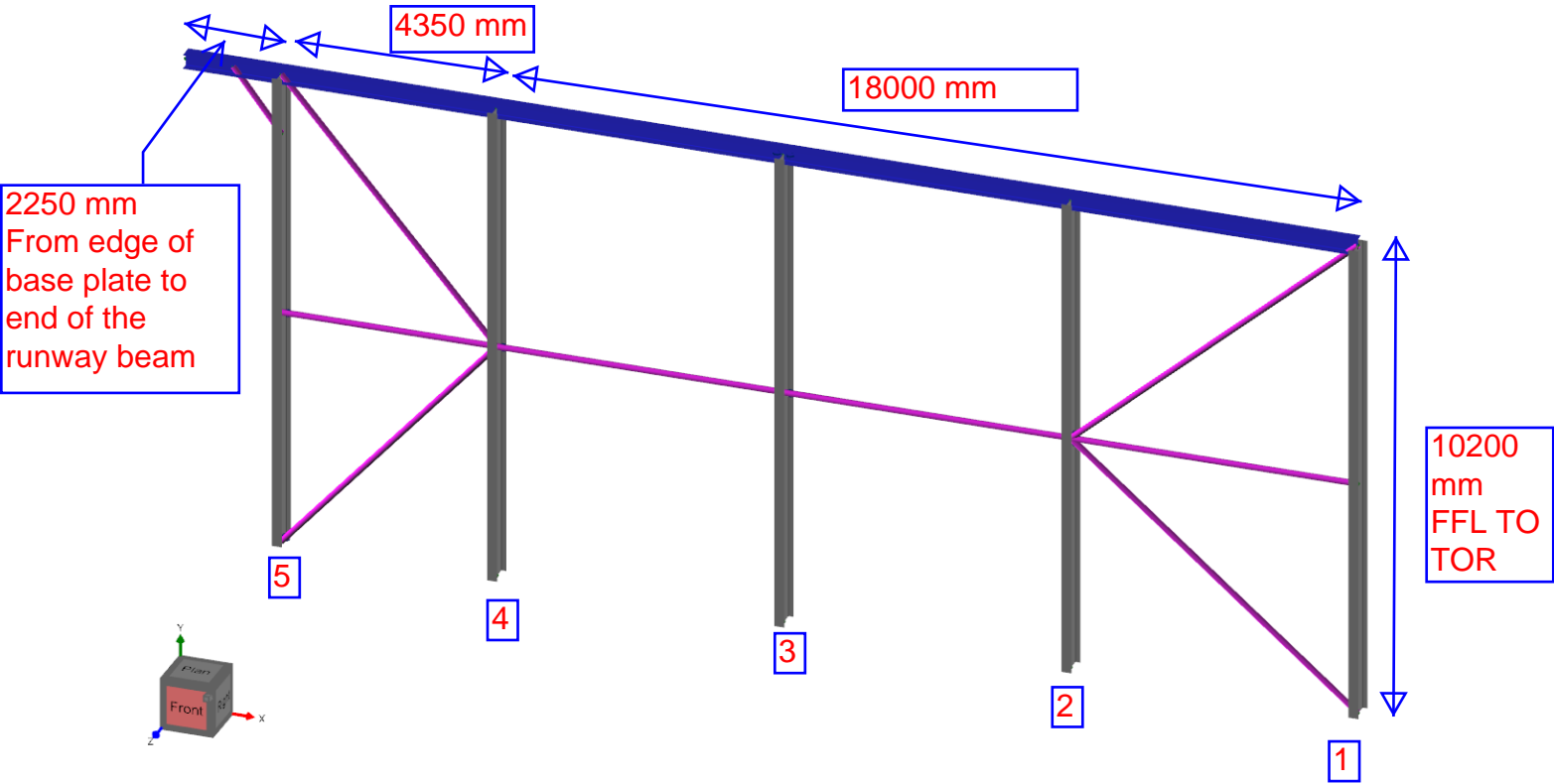
CLIENT: **DOWNER EDI WORKS**
 PROJECT: MASCOT
 EQUIP. ID: RUNWAY

Eilbeck CRANES
 copyright by Eilbeck Cranes www.eilbeckcranes.com.au

DWG TITLE
 10 T x 22.52 M SPAN CRANE 'ELK'
 ARRANGEMENT AND ASSEMBLY DRAWING
 RUNWAY GENERAL ARRANGEMENT (1 / 1)

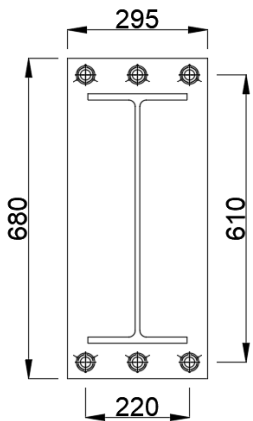
REG. CODE	SIZE	UNITS	DWG NO	REV
	A3	mm	28831-DMS-120	\ D

Job No. 28331 Date 22/03/2021 Engineer AT Revision 0 Doc. No. ECF-28331-EDC-101_0	Free Standing Runway Structure Reactions	
Notes:	Loads Are Dynamic As Per AS 1418.1 Load Combination Factor = 0.9 [0.9*(Dead weight + Live Load + In Service Load)] In Service Wind Speed = 10 m/s	



Maximum Support Reactions:

Support	Fx (kN)	Fy (kN)	Fz (kN)	Mx (kNm)	My (kNm)	Mz (kNm)
1	5.5	112	13	110	0.1	1.5
2	1	145	8	71	0.1	1.3
3	0.1	115	11	107	0.1	1
4	1	145	8	71	0.1	1.3
5	5.5	170	13	140	0.1	1.5



M20 Cast-In
Anchors Grade 8.8
carbon steel (To
resist 60-70 kN
Tension- [Working
load limit])