

RECEIPT



Payment Date
26 Oct 2021

PENINSULA MARINE
COVERS PTY LTD
Factory 11/3 Lumeah Rd
SOMERVILLE VIC 3912
AUSTRALIA

Sent Date
26 Oct 2021

ABN:
52 648 596 267

Total AUD paid	440.00
----------------	--------

Invoice Date	Reference	Payment Reference	Invoice Total	Amount Paid	Still Owing
29 Jun 2021	INV-1018 *	Payment	880.00	440.00	0.00
			Total AUD	440.00	0.00

* Includes additional invoice activity

Additional invoice activity

Date	Reference	Payment Reference	Invoice Total	Amount Paid
29 Jun 2021	INV-1018	Payment	880.00	
26 Oct 2021				440.00
Additional invoice activity				
28 Jun 2021	Payment			440.00
			Total Paid	880.00
			Invoice amount still owing	0.00



Tax Invoice



1800 440 255
 boatyard@marthiacove.com
 ABN: 50 973 343 084

Ref No: MMC-INV1333-21
 Date: 01/07/2021
 Customer account: 58521
 Due date: 02/07/2021

Description	Units	Rate	Net	Tax	Amount
38 City Boat Libbyloub Packages - Half Only (Inland) / Includes two way BT, high pressure hull clean, 5 days hardware storage, below water hull preparation, roller application of two coats of anibond (International or equivalent) ProSpeed Propeller, Shaft & Hubber Only / Qty 2 Consumables and Materials / 2 pairs 50mm rubber anodes & shaft anodes 120mm long Ø92 Fork Lift Hire with Operator / To remove and install gear boxes. Boatyard Labour / Labour to install anodes.	10.97	\$247.50	\$2,466.25	\$246.63	\$2,712.88
	2.00	\$354.00	\$644.73	\$64.47	\$709.20
	1.00	\$295.00	\$268.18	\$26.82	\$295.00
	0.50	\$117.00	\$53.16	\$5.32	\$58.50
	0.50	\$85.00	\$38.64	\$3.86	\$42.50
Total:			\$3,472.98	\$347.30	\$3,820.28
Tax type			Tax rate	Tax	Amount
GST			10%	\$347.30	\$3,820.28

Total Balance: \$3,820.28

For immediate payment via Credit Card please click here: Pay Invoice

This invoice must be paid in full prior to launch







Professional Marine Management
2/6 Fuj Crescent
Mornington VIC 3931
Australia
Phone: 03 5909 8533
stevens@promarine.net.au
www.promarine.net.au
ABN: 66 849 099 306

Invoice: SQ0000164

Tax Invoice

Invoice date: 27/07/2021

Bill to:

~~XXXXXXXXXX~~

Due:

27/07/2021

ITEM	DESCRIPTION	UNITS	UNIT PRICE (ex GST)	TAX TYPE	AMOUNT (ex GST)
LAB2	Carry out complete rebuild to transmission. Hrs Strip down reduction marine gearbox. Clean/very dirty and burnt fluid, inspect all parts for wear and damage. Found hard and broken seals, burnt out forward clutch and worn out oil pump. Replaced forward clutch frictions and steels. Checked all bearings for wear and replaced as required. Assemble transmission using all new metal rings, gaskets, O rings and seals. Filled speedo sleeve to input shaft. Test and run transmission for 30 minutes on test bench checking pressures, operation, leaks etc, all ok. Carry out modifications to transmission dipsticks to allow easy inspection/checks of oil levels in transmissions.	1	3,554.54	GST	3,554.54
LAB1	Dipstick modification and parts Hrs	2	100.00	GST	200.00

Sub-Total (ex GST): \$3,754.54
GST: \$375.45
Total (inc GST): \$4,129.99
Amount Paid: \$0.00
AMOUNT DUE: \$4,129.99

Notes

How to Pay Due 27/07/2021

Bank Deposit via EFT

Bank:	Westpac
Name:	Professional Marine Management
BSB:	033039
ACC:	000460
Ref:	SQ0000164



Professional Marine Management
 2/5 Fujl Crescent
 Mornington VIC 3931
 Australia
 Phone: 03 5909 8533
 steven@promarine.net.au
 www.promarine.net.au
 ABN: 65 949 899 366

Invoice: SQ00000155

Tax Invoice

Invoice date: 16/09/2021

Bill to:

Date:

20/09/2021

ITEM	DESCRIPTION	UNITS	UNIT PRICE (ex GST)	TAX TYPE	AMOUNT (ex GST)
LAB1	Proceed to vessel at Martha Cove Marina and carry out removal of transmission on starboard side engine. Unable to slide propeller shaft back enough to remove transmission. Notify customer of issue. Vessel will need to be hoisted out of water to enable removal of transmission.	Hrs 2	140.00	GST	280.00
DISB3	Travel- Round trip	Qty 0.5	140.00	GST	70.00
LAB1	Proceed to vessel at Martha Cove Boatyard and carry out inspection of propeller shaft. Found shaft to be extremely tight in 2 x outboard bearings. Clean shafts to remove antifoul paint and barnacles. Tried to remove shaft back with no luck. Carried out removal of stuffing box from shaft stern tube, carried out removal of intermediate p bracket and freed up from shaft. Spent some time to free up shaft in p bracket outboard bearing. Remove shaft back to rubber to allow removal of transmission.	Hrs 3	140.00	GST	420.00
DISB3	Travel- Round trip	Qty 0.5	140.00	GST	70.00
LAB1	Proceed to vessel at Martha Cove Boatyard and carry out removal of transmission on starboard engine. Reinstall intermediate outboard bearing p bracket. Reinstall stuffing box and associated parts. Proceed to repair and drop off transmission for assessment for failure/repairs.	Hrs 5	140.00	GST	700.00
DISB3	Travel- Round trip	Qty 0.5	140.00	GST	70.00
LAB1	Pick up transmission from repairer and proceed to vessel at Martha Cove Boatyard. Prepare and carry out installation of transmission on starboard engine. Install transmission, oil hoses, shaft coupling, shaft cable and bracket etc. Install new transmission oil into transmission. Start, run, test, all ok. Found no water flow on starboard engine out exhaust. Removed hoses.	Hrs 8	140.00	GST	1,120.00

ITEM	DESCRIPTION	UNITS	UNIT PRICE (ex GST)	TAX TYPE	AMOUNT (ex GST)
LAB1	backed flush and prime raw water system, start, test ok. Top up level as required. Carry out oil change on port side transmission, start and top up fluid as required. Carry on with service on port and sbid engine.	Hrs	140.00	GST	1,050.00
	Carry on with service on port and sbid engine. Carry out replacement of engine oil, oil filter, fuel filter and anodes. Carry out replacement of raw water impellers. Extra lime taken due to limited access and seized impellers on shafts caused by no grease applied when replaced last. Install new impellers and cover plate gasket. Secure engine breather, canister on sbid engine. No bracket due to after cooler removed on sbid engine. Secure, all ok. Checked bypass hose fittings between turbo charger and intake manifold and found elbow dislodged from rubber hoses, thus no turbo boost from sbid engine. Removed elbow and connecting hoses, clean end and reinstall with several new clamps. To be checked on sea trial. Tidy up and proceed back to workshop.	0.5	140.00	GST	70.00
DISB3	Travel- Round trip	Hrs	140.00	GST	1,120.00
LAB1	Proceed to vessel at Martha Cove Boatyard and carry on with repairs to main engines. Replace all belts on port and sbid engines. Attend to exhaust system on port engine. Found dry exhaust elbow flange totally corroded away. Also found flange on mixing elbow totally corroded away. Apply high temp sealant and exhaust wrap to seal with T bolt clamp. Start, run. Minimal exhaust gases in engine room. Customer to monitor.	8	140.00	GST	
	Carry out complete wash down of main engines and engine room/bilge. Used high pressure compressed air to remove corrosion on main engines and mounts. Used vacuum to remove oil contamination from bilge. Extra lime taken to clean all black soot in engine room caused by leaking exhaust on port side engine. Paint main engines in required areas. Checked issue with tacto not working on sbid engine. Cleaned up several connections. possible issue with alternator tacto output signal. To be checked by electrician. Tidy up and proceed back to workshop.	0.5	140.00	GST	70.00
DISB3	Travel- Round trip	Hrs	140.00	GST	280.00
LAB1	Proceed to vessel at Martha Cove Boatyard and carry out sea trial on vessel. Found temp gauges to be reading inaccurately. Placed temp. thermal gun on main engine and found both engines to be within specification based on the age of the engines.	2	140.00	GST	
	Found slight weep from seal in sbid engine raw water pump at high engine rpm. Discuss issue with owner, customer to monitor. Placed vessel back at sea pen. Checked issue with no 12V system on vessel. Checked battery and to be 100%				

ITEM	DESCRIPTION	UNITS	UNIT PRICE (ex GST)	TAX TYPE	AMOUNT (ex GST)
	discharged. Checked and found fuse blown on 24V/12V charger. Replaced fuse still power issue with charger. Notify customer with issue. to be checked by electrician. Proceed back to workshop.				
DISB3	Travel- Round trip	Qty 0.5	140.00	GST	70.00
CUST1	Oil Filter	Qty 1	28.78	GST	28.78
CUST1	Fuel Filter	Qty 1	11.54	GST	11.54
CUST1	Belt (1 x spare)	Qty 3	25.99	GST	77.97
CUST1	Belt	Qty 1	27.40	GST	27.40
CUST1	Valvoline Heavy Duty Engine Oil 15W 40	Qty 24	8.96	GST	215.04
CUST1	Clamps (assortment)	Qty 1	17.60	GST	17.60
CUST1	Paint- Perkins Blue	Qty 2	13.90	GST	27.80
CUST1	Transmission oil	Qty 6	13.85	GST	83.10
CUST3	Minor consumables bigs cleaner, acetone, rags, oil waste levy etc	Qty 1	75.00	GST	75.00
CUST2	Fees paid to enter Marina	Qty 4	45.45	GST	181.80
			Sub-Total (ex GST):		\$6,136.03
			GST:		\$613.60
			Total (inc GST):		\$6,749.63
			Amount Paid:		\$0.00
			AMOUNT DUE:		\$6,749.63

Notes

How to Pay Due 20/03/2021

Bank Deposit via EFT

Bank:	Westpac
Name:	Professional Maritime Management
BSB:	033039
ACF:	663460
Ref#:	5000000155

INVOICE NUMBER: SQ00000155 AMOUNT DUE: \$6,749.63



Stephen Capon

Stephen Capon

7 Omega Drive

Ocean Grove 3226

M: 0427 542 853

E: lscapon@iinet.net.au

ABN: 77834404639

INSPECTION AND OUT OF WATER SURVEY

To Whom It May Concern,

Vessel:

Savage 10M

Owner:

[REDACTED]
[REDACTED]
[REDACTED]
[REDACTED]

Vessel Particulars:

LOA: 10M BEAM: 4M DRAFT: 1M

Type:

Fibreglass Cabin Cruiser with self-draining cockpit, lockable wheelhouse, twin engine. Built by Savage boats and refurbished to a very high standard.

Engines in serviceable condition

Engine 1: Perkins 6354.4 Diesel eng no. TU33246U796231S

Engine 2: Perkins 6354.4 Diesel eng no. N/A

Electric Bilge pump with float switch

2 x Battery Banks

New 1000lt diesel tank new fuel lines and hose clamps on all plumbing, new battery leads and isolator switch fitted. All new hydraulic steering, skin fittings, seacocks, anodes, drive shafts, couplings, stuffing boxes, rudders and propellers.

Cabin and wheelhouse/glass has been constructed all new

In my opinion, I deem this boat to be in first class order in sound seaworthy condition.

Kind regards,

Stephen Capon

Stephen Capon

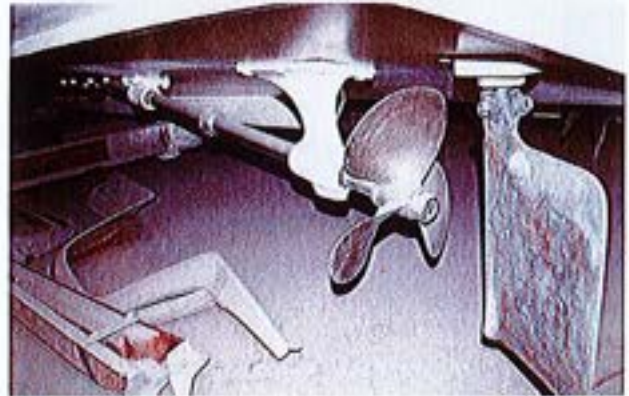
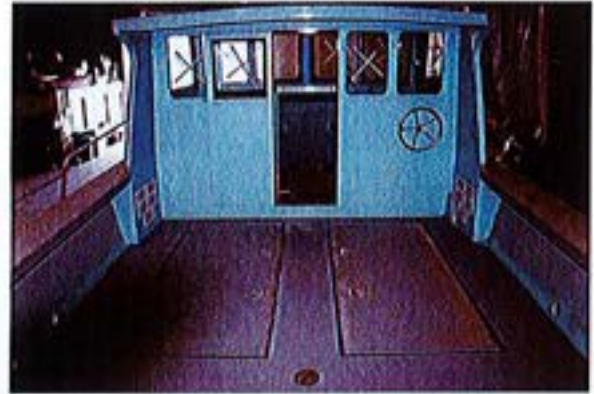
7 Omega Drive

Ocean Grove 3226

M: 0427 542 853

E: lscapon@iinet.net.au

ABN: 77834404639



MCMILLAN MARINE

SURVEYORS & CONSULTANTS

BOAT INSURANCE INSPECTION FORM

Date 20 / 02 / 2020		Policy Number 	
Client's Name 			
Address 		State 	Postcode
Inspected at: Afloat <input type="checkbox"/> Slipped <input checked="" type="checkbox"/>			Due Date
The Boatyard, Martha Cove, Victoria			/ /
Vessel Name Dendy		HIN/Rego/Sail Number Rego # RC 909	
Builder Savages			
Date Launched 		LOA 	
/ / 1970 / Full restoration 2016		10 m / 33'	
Construction Material - Hull GRP		Deck Timber / Plywood / GRP sheathed	Keel GRP / Timber
Design - Type of Rig Savage 10m cray boat / twin inboard		Beam 4 m / 13' 1"	MF Draft MF 1 m / 3' 3"

HULL CONSTRUCTION/CONDITION

Component	Accept	Decline	Not Applicable	Comment/Details/Description
Keel	X			The moulded keel of the vessel has a timber deadwood. Secure & serviceable
Keelbolts	X			Deadwood bolted through keel floors. No corrosion sighted. Serviceable condition
Surface U/W	X			Vessel being prepared for antifouling. No signs of damage, repair of blistering.
Surface A/W	X			No signs of damage or repair. Very good condition
Deck	X			Sheathed plywood on timber deck beams. No soft spots of deterioration. Serviceable
Cockpit	X			Open cockpit area, ply & GRP sheathed. Serviceable condition
Coach House	X			Timber & ply construction. No signs of deterioration. Serviceable condition
Frames	X			GRP & timber construction. No signs of stress or deterioration. Serviceable
Stringers	X			Timber & GRP construction. No signs of stress or deterioration. Sound
Bulkheads	X			Plywood & GRP construction. No signs of deterioration. Sound
Cabin/Interior	X			Bunks and storage. Very good serviceable condition
Marine Toilet	X			Jabsco manual marine toilet. Plumbing & unit sound serviceable condition
Seacocks	X			All functioning & of serviceable condition
Skin Fittings	X			Bonded & sealed. Sound, serviceable condition
Cockpit Drains	X			Scuppers in topsides & transom. Serviceable condition
Propeller	X			2 @ 15" x 3 bladed bronze props. Sound, secure & serviceable condition
Propeller Shaft	X			2 @ 2" S/S shafts. No signs of crevice or pitting corrosion. Serviceable condition
Propeller Skag	X			Bronze "P" brackets w/ mid way brackets. Sound, serviceable condition
Sterngland	X			Bronze stern tube w/ stuffing box. Sound, serviceable condition
Rudder	X			2 x bronze rudders of sound condition
Rudder Mounts	X			Clamps & top bearing of sound condition
Rudder Stock/Gland	X			Stuffing box w/ bronze rudder tube & S/S stock. Sound, serviceable condition
Steering Linkages	X			Linkage arm w/ tillers & hydraulic steering. Serviceable condition
Auxiliary Steering			X	Top of rudder stocks accessible. No emergency tiller sighted
Sternhead Fitting	X			Timber split w/ S/S anchor roller. Assembly of sound condition
Recommendations: 				

MCMILLAN MARINE

SURVEYORS & CONSULTANTS

MOTOR INSTALLATION/CONDITION

Fuel: Petrol <input type="checkbox"/> Diesel <input checked="" type="checkbox"/>		Motor Type: Inboard <input checked="" type="checkbox"/> Outboard <input type="checkbox"/> Stern Drive <input type="checkbox"/> Jet <input type="checkbox"/>			
Brand: Perkins x 2			Age: 88		HP: approx 120 each
Model Number: T6.3544			Serial Number: Engine 1 - TU33246U796231S Engine 2 - not sighted		
Component	Accept	Decline	Not Applicable	Comment/Details/Description	
Installation	X			Sound steel engine beds over GRP stringers. Sound condition	
Controls	X			Twin single lever w/ Morse cable. Smooth function. Serviceable condition	
Exhaust	X			Hoses, clamps & components of sound, serviceable condition	
Fuel Lines/Fittings	X			Appropriate hoses & fittings used. No signs of leakage or deterioration	
Fuel Tanks	X			1 x 1000lt tank w/ protective coating. Securely mount, serviceable condition	
Filter	X			Deck filler of serviceable condition	
Venting	X			Vented to exterior of vessel	
Connection & Lines	X			Serviceable condition	
Electrical Harness	X			Serviceable condition	
Electrical Fitting	X			Serviceable condition	
Stove			X		
Chain Plates			X		
Gas Bottles			X	Incl. Gas Compliance Plate Number No LPG system installed	
Connections & Lines			X		
Position			X		
Venting			X		
Gas Detector			X		
Batteries	X			2 x double banks + single emergency battery. 4 x Century 86Z + 1 x N702M	
Mounting	X			Banks in dedicated GRP boxes w/ single securely mounted	
Bilge Pump - Manual			X		
Bilge Pump - Electrical	X			1 x engine PTO driven pump + 12v pump. Functioning	
Recommendations					

SAFETY EQUIPMENT

Component	Accept	Decline	Not Applicable	Comment/Details/Description
Anchor & Warp	X			Gal plough anchor w/ 8mm st'rd link chain + rope. Serviceable
Flares		X		Flares sight onboard were out of date
Fire Extinguisher	X			1 x 9kg powder type of serviceable condition
Spot Light		X		Water proof torch sighted onboard was not working
Lifejackets	X			PDF type 1 jackets stowed onboard. Serviceable condition
Navigational Lights	X			Appropriate configuration and functioning
Life Rail			X	
Pulpits	X			Alloy rail to cockpit area. Securely mounted. No damage sighted
Push Its	X			Low alloy grab rail around cockpit area. Securely mounted, no damage
Stanchions/Lifelines			X	
Recommendations				
Maintain safety gear to local marine authorities recommendation				

MCMILLAN MARINE

SURVEYORS & CONSULTANTS

GENERAL REMARKS

Restricted Waters Open waters

This vessel originally built in 1970 as a cray boat to 2C survey standards.

It under went a total restoration and relaunched in 2016.

It was well presented in a neat and clean manner

The hull and deck were seen to be of sound condition

Through hull fittings and components showed no signs of leakage or corrosion

Engines were rebuilt and assumed to have approximately 500 hours

It is in the opinion of the surveyor that this vessel is of sound and seaworthy condition

Market Value: \$ 120,000

INSURED

Name

Signature

Date

AUTHORISED MARINE SURVEYOR

Name **Campbell McMillan**Signature date **20/02/2020**

McMillan Marine Surveying
AMSA Surveyor # 127353
ABN - 14 025 307 344





