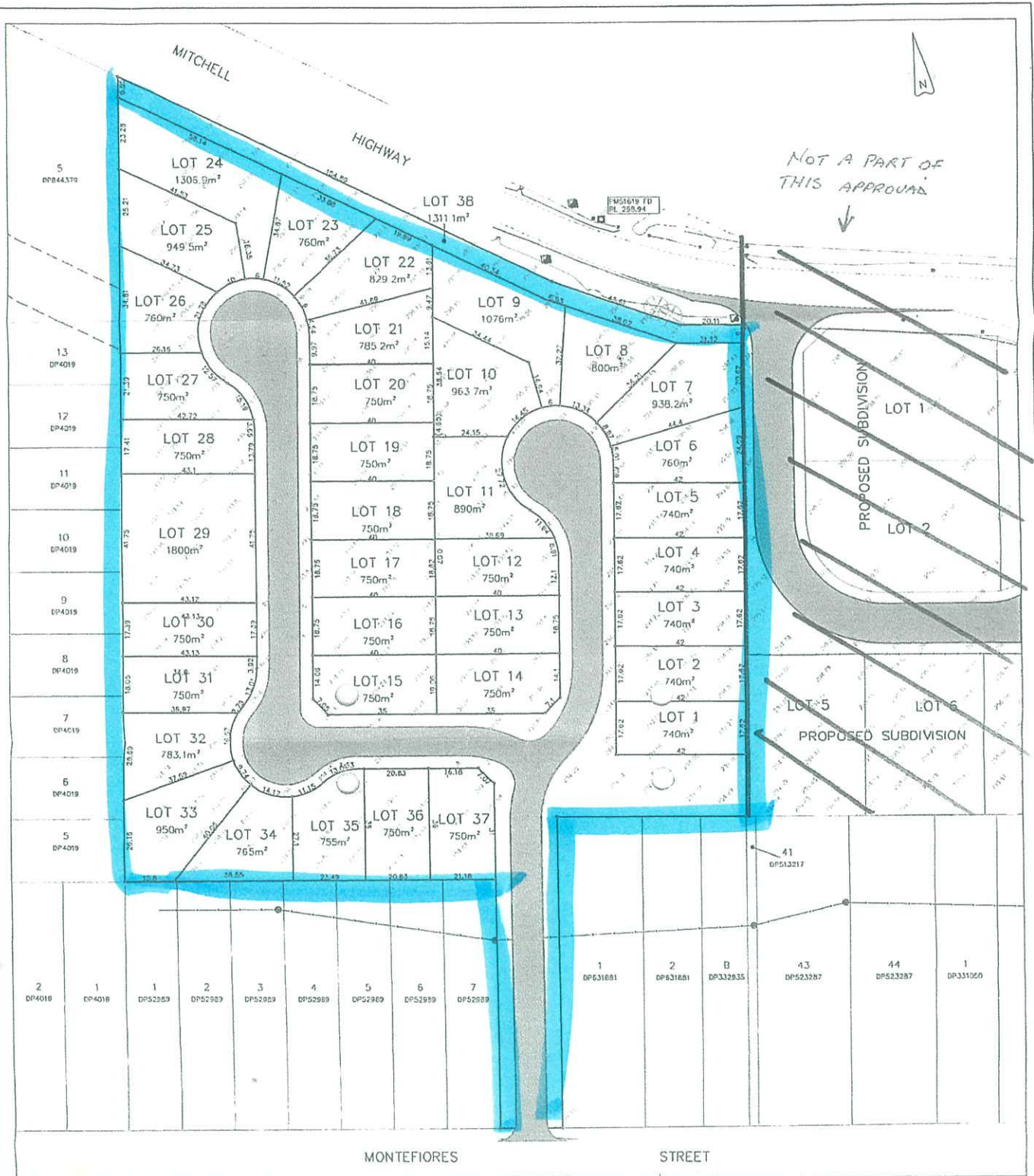


Notes:
 This plan was prepared for Macquarie Developments as a proposed subdivision to accompany a subdivision application to Wellington Council and should not be used for any other purpose. The dimensions, areas and total number of lots shown hereon are subject to field survey and also to the requirements of council and to any other authority which may have requirements under any relevant legislation. In particular, no reliance should be placed on the information on this plan for any financial dealings involving the land. This note is an integral part of this plan.

WELLINGTON COUNCIL
 DEVELOPMENT CONSENT
 23 SEP 2015 10:31
 These are the plans, specifications and documents approved by council.
 MONTEFIORES
 [Signature]

- STAGE 1 (PROPOSED)
- STAGE 2 (PROPOSED)
- STAGE 3 (PROPOSED)

<p>DOHERTY SMITH CONSULTING SURVEYORS</p> <p>PO Box 67 WELLINGTON 4142 P: 0445 1422 F: 0445 1724</p> <p>4145 118 Darling Street WELLINGTON P: 0445 1088 F: 0445 1088</p>	Approved by <i>[Signature]</i> Height Datum AHD Datum Source FM51619 Plan Scale 1:500 Designed by EKS Checked by EKS	Plan Title <p style="text-align: center;">PROPOSED STAGING OF SUBDIVISION</p> Client <p style="text-align: center;">MACQUARIE DEVELOPMENTS</p> Project <p style="text-align: center;">LOTS 1 & 2 DP1115930 JASMINE DRIVE, MONTEFIORES</p>	Drawing No. <p style="text-align: center;">13082-DA5</p> Revision <p style="text-align: center;">A</p> Sheet <p style="text-align: center;">1 OF 1</p> Job No. <p style="text-align: center;">13082</p> Date <p style="text-align: center;">02/04/2015</p> Drawn by <p style="text-align: center;">ZAS</p>													
	<table border="1" style="width: 100%; border-collapse: collapse;"> <tr> <th style="width: 5%;">A1</th> <th style="width: 10%;">Rev</th> <th style="width: 15%;">Date</th> <th style="width: 40%;">Description</th> <th style="width: 10%;">FKS</th> <th style="width: 10%;">Approved</th> </tr> <tr> <td> </td> <td> </td> <td> </td> <td> </td> <td> </td> <td> </td> </tr> </table>			A1	Rev	Date	Description	FKS	Approved							
	A1	Rev	Date	Description	FKS	Approved										



NOT A PART OF THIS APPROVAL

PROPOSED SUBDIVISION

PROPOSED SUBDIVISION

LEGEND

- POWER POLE
- ⊙ SEWER MANHOLE
- ⊠ TELSTRA PIT
- ⊙ SEWER VALVE

Notes:
 This plan was prepared for Macquarie Developments as a proposed subdivision to accompany a subdivision application to Wellington Council and should not be used for any other purpose. The dimensions, areas and total number of lots shown hereon are subject to field survey and also to the requirements of council and to any other authority which may have requirements under any relevant legislation. In particular, no reliance should be placed on the information on this plan for any financial dealings involving the land. This note is an integral part of this plan.

WELLINGTON COUNCIL
 DEVELOPMENT CONSENT
 13/03/15
 The plans, specifications and documents approved by Council
 [Signature]

DOHERTY SMITH & PARTNERS
 CONSULTING SURVEYORS
 www.doherty-smith.com.au
 4 113 115 Darling Street
 SYDNEY NSW 2000
 P 02 9551 1233
 F 02 9551 1239

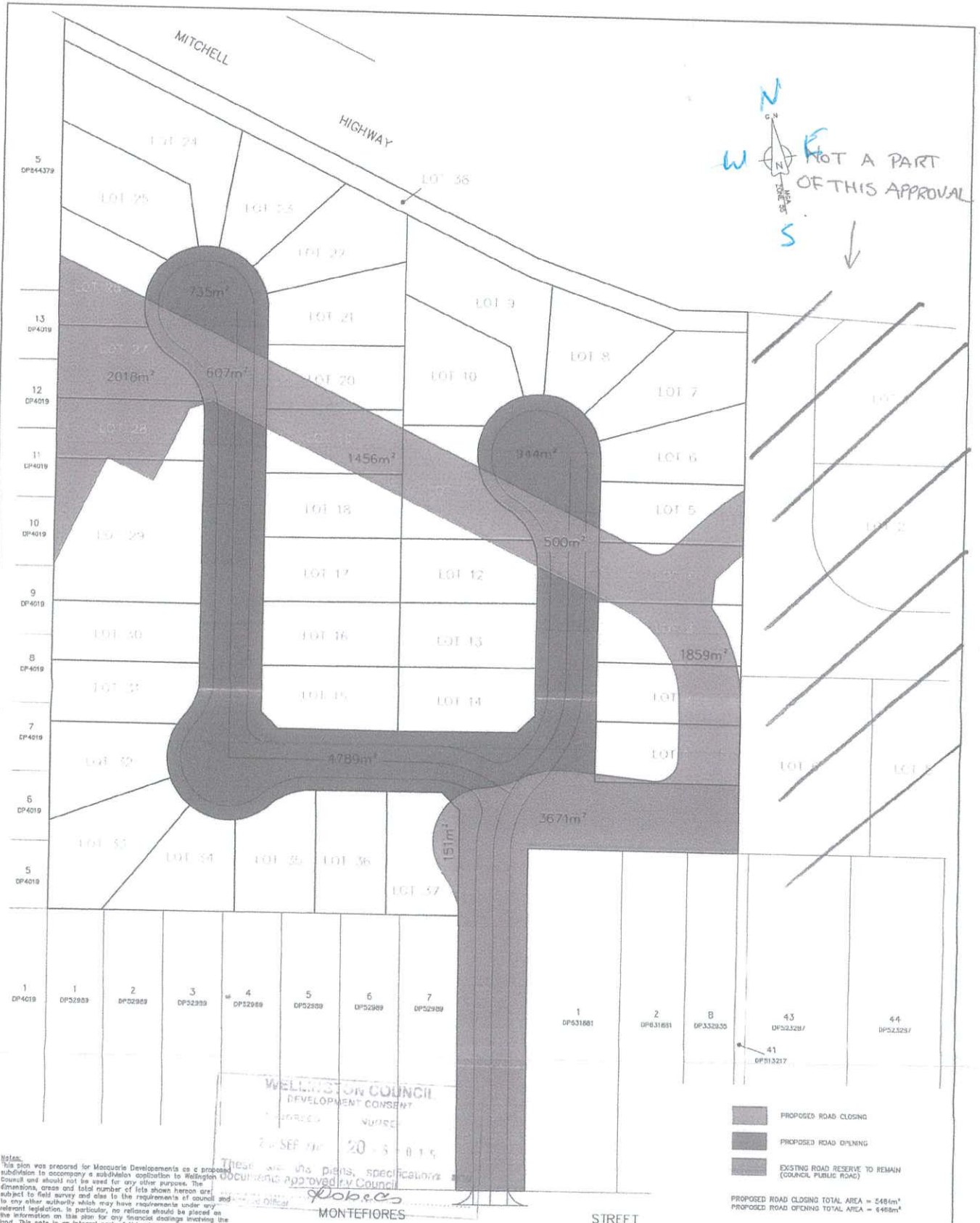
Rev	Date	Description	Approved
1	13/03/15	PRELIMINARY	EKS

Approved by [Signature]
 Height Datum AHD
 Datum Source PM51619
 Plan Scale 1:600
 Designed by EKS
 Checked by EKS

Plan Title
PROPOSED SITE PLAN
 Client
MACQUARIE DEVELOPMENTS
 Project
 LOTS 1 & 2 DP1115930
 JASMINE DRIVE, MONTEFIORES

Drawing No
13082-DA2
 Revision
 B
 Sheet
 2 OF 2
 Job No.
 13082
 Date
 13/03/15
 Drawn by
 ZAS

A1



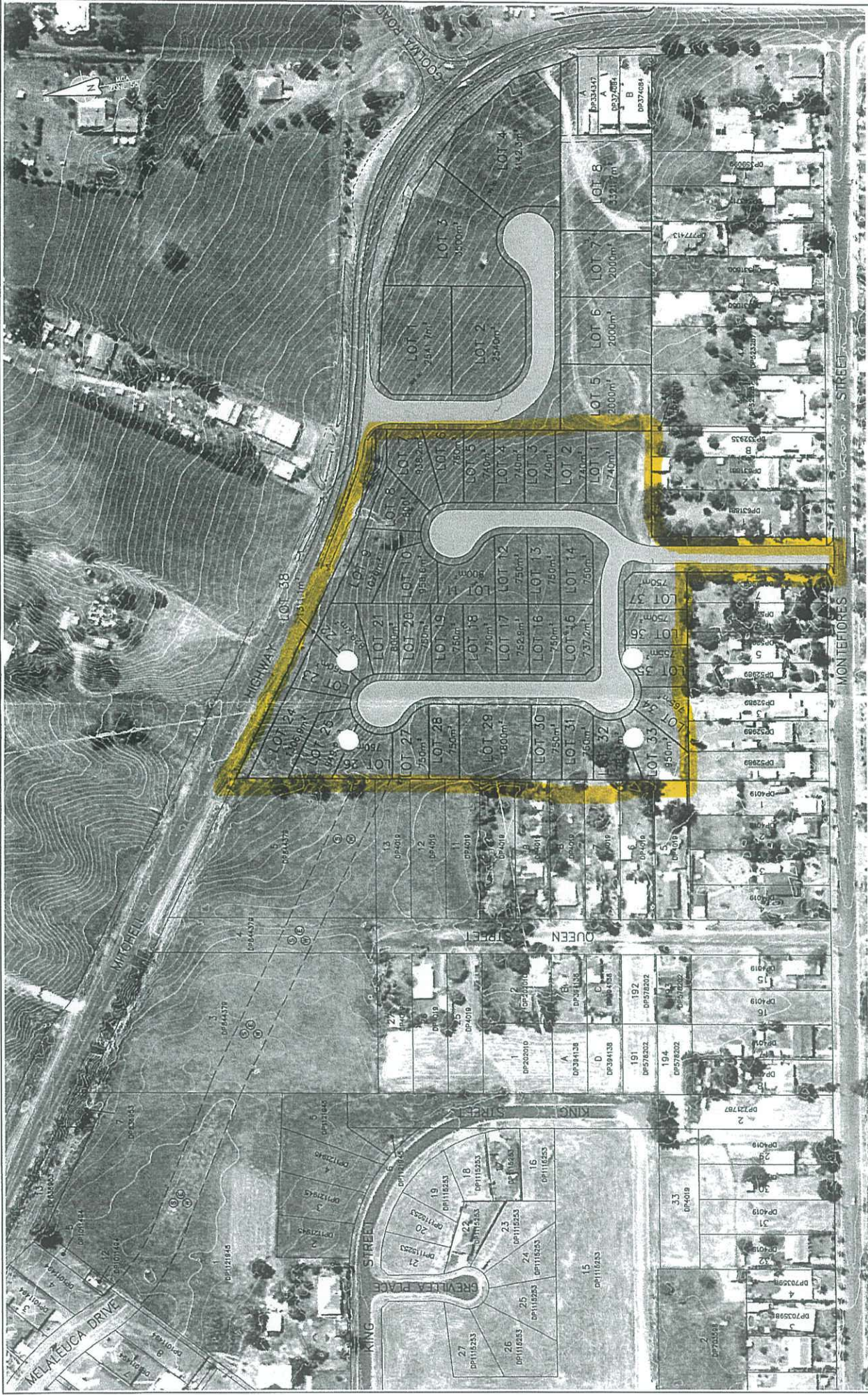
W E S
N
NOT A PART OF THIS APPROVAL
↓

WELLINGTON COUNCIL
DEVELOPMENT CONSENT
20 SEP 2015
20-3-015
These are the plans, specifications and documents approved by Council
Job: e.c.s.
MONTEFIORES

PROPOSED ROAD CLOSING
PROPOSED ROAD OPENING
EXISTING ROAD RESERVE TO REMAIN (COUNCIL PUBLIC ROAD)
PROPOSED ROAD CLOSING TOTAL AREA = 2486m²
PROPOSED ROAD OPENING TOTAL AREA = 6486m²

Notes:
This plan was prepared for Macquarie Developments as a proposed subdivision to accompany a subdivision application to Wellington Council and should not be used for any other purpose. The dimensions, area and total number of lots shown hereon are subject to field survey and also to the requirements of council and relevant legislation. In particular, no reliance should be placed on the information on this plan for any financial dealings involving the land. This note is an integral part of this plan.

DOHERTY SMITH CONSULTING SURVEYORS www.dohertysmith.com.au 4115-113 Doherty Street WELLINGTON P. 04-484 1483 F. 04-484 2320	Approved by: <i>Richard</i> Height Datum: AHD Datum Source: PMS1619 Plan Scale: 1:500 0 5 10 20 25	Plan Title: PROPOSED ROAD OPENING AND CLOSING PLAN	Drawing No.: 13082-DA4 Revision: A Sheet: 1 OF 1
	Designed by: EKS Checked by: EKS	Client: MACQUARIE DEVELOPMENTS	Job No.: 13082
	Project: LOTS 1 & 2 DP1115930 JASMINE DRIVE MONTEFIORES	Date: 02/04/2015 Drawn by: ZAS	
	Rev: A Date: 02/04/15 Description: PRELIMINARY EKS Approved		



This plan was prepared for Mr Tony Bird and Macquarie Development as a proposed concept stormwater strategy to accompany a subdivision application to Wellington Council and should not be used for any other purpose. The dimensions, areas and total number of lots shown hereon are an indication only. Particular attention should be placed on the information on this plan for any financial dealings involving the land. This note is an integral part of this plan.

⑤ EASEMENT FOR DRAINAGE OF SEWAGE 18 WIDE (DP1112146)
 ⑥ EASEMENT FOR DRAINAGE OF WATER 18 WIDE (DP1112146)
 ⑦ EASEMENT FOR SERVICES 18 WIDE (DP1084733)

Plan No.	Plan Scale	Height Datum	Origin Source
1:1000	AHD	EKS	PW51619
11/03/15	REDEMARC	EKS	Approved

191 DP578302 192 DP578302
 194 DP578302 195 DP578302
 196 DP578302 197 DP578302
 198 DP578302 199 DP578302
 200 DP578302 201 DP578302
 202 DP578302 203 DP578302
 204 DP578302 205 DP578302
 206 DP578302 207 DP578302
 208 DP578302 209 DP578302
 210 DP578302 211 DP578302
 212 DP578302 213 DP578302
 214 DP578302 215 DP578302
 216 DP578302 217 DP578302
 218 DP578302 219 DP578302
 220 DP578302 221 DP578302
 222 DP578302 223 DP578302
 224 DP578302 225 DP578302
 226 DP578302 227 DP578302
 228 DP578302 229 DP578302
 230 DP578302 231 DP578302
 232 DP578302 233 DP578302
 234 DP578302 235 DP578302
 236 DP578302 237 DP578302
 238 DP578302 239 DP578302
 240 DP578302 241 DP578302
 242 DP578302 243 DP578302
 244 DP578302 245 DP578302
 246 DP578302 247 DP578302
 248 DP578302 249 DP578302
 250 DP578302 251 DP578302
 252 DP578302 253 DP578302
 254 DP578302 255 DP578302
 256 DP578302 257 DP578302
 258 DP578302 259 DP578302
 260 DP578302 261 DP578302
 262 DP578302 263 DP578302
 264 DP578302 265 DP578302
 266 DP578302 267 DP578302
 268 DP578302 269 DP578302
 270 DP578302 271 DP578302
 272 DP578302 273 DP578302
 274 DP578302 275 DP578302
 276 DP578302 277 DP578302
 278 DP578302 279 DP578302
 280 DP578302 281 DP578302
 282 DP578302 283 DP578302
 284 DP578302 285 DP578302
 286 DP578302 287 DP578302
 288 DP578302 289 DP578302
 290 DP578302 291 DP578302
 292 DP578302 293 DP578302
 294 DP578302 295 DP578302
 296 DP578302 297 DP578302
 298 DP578302 299 DP578302
 300 DP578302 301 DP578302
 302 DP578302 303 DP578302
 304 DP578302 305 DP578302
 306 DP578302 307 DP578302
 308 DP578302 309 DP578302
 310 DP578302 311 DP578302
 312 DP578302 313 DP578302
 314 DP578302 315 DP578302
 316 DP578302 317 DP578302
 318 DP578302 319 DP578302
 320 DP578302 321 DP578302
 322 DP578302 323 DP578302
 324 DP578302 325 DP578302
 326 DP578302 327 DP578302
 328 DP578302 329 DP578302
 330 DP578302 331 DP578302
 332 DP578302 333 DP578302
 334 DP578302 335 DP578302
 336 DP578302 337 DP578302
 338 DP578302 339 DP578302
 340 DP578302 341 DP578302
 342 DP578302 343 DP578302
 344 DP578302 345 DP578302
 346 DP578302 347 DP578302
 348 DP578302 349 DP578302
 350 DP578302 351 DP578302
 352 DP578302 353 DP578302
 354 DP578302 355 DP578302
 356 DP578302 357 DP578302
 358 DP578302 359 DP578302
 360 DP578302 361 DP578302
 362 DP578302 363 DP578302
 364 DP578302 365 DP578302
 366 DP578302 367 DP578302
 368 DP578302 369 DP578302
 370 DP578302 371 DP578302
 372 DP578302 373 DP578302
 374 DP578302 375 DP578302
 376 DP578302 377 DP578302
 378 DP578302 379 DP578302
 380 DP578302 381 DP578302
 382 DP578302 383 DP578302
 384 DP578302 385 DP578302
 386 DP578302 387 DP578302
 388 DP578302 389 DP578302
 390 DP578302 391 DP578302
 392 DP578302 393 DP578302
 394 DP578302 395 DP578302
 396 DP578302 397 DP578302
 398 DP578302 399 DP578302
 400 DP578302 401 DP578302
 402 DP578302 403 DP578302
 404 DP578302 405 DP578302
 406 DP578302 407 DP578302
 408 DP578302 409 DP578302
 410 DP578302 411 DP578302
 412 DP578302 413 DP578302
 414 DP578302 415 DP578302
 416 DP578302 417 DP578302
 418 DP578302 419 DP578302
 420 DP578302 421 DP578302
 422 DP578302 423 DP578302
 424 DP578302 425 DP578302
 426 DP578302 427 DP578302
 428 DP578302 429 DP578302
 430 DP578302 431 DP578302
 432 DP578302 433 DP578302
 434 DP578302 435 DP578302
 436 DP578302 437 DP578302
 438 DP578302 439 DP578302
 440 DP578302 441 DP578302
 442 DP578302 443 DP578302
 444 DP578302 445 DP578302
 446 DP578302 447 DP578302
 448 DP578302 449 DP578302
 450 DP578302 451 DP578302
 452 DP578302 453 DP578302
 454 DP578302 455 DP578302
 456 DP578302 457 DP578302
 458 DP578302 459 DP578302
 460 DP578302 461 DP578302
 462 DP578302 463 DP578302
 464 DP578302 465 DP578302
 466 DP578302 467 DP578302
 468 DP578302 469 DP578302
 470 DP578302 471 DP578302
 472 DP578302 473 DP578302
 474 DP578302 475 DP578302
 476 DP578302 477 DP578302
 478 DP578302 479 DP578302
 480 DP578302 481 DP578302
 482 DP578302 483 DP578302
 484 DP578302 485 DP578302
 486 DP578302 487 DP578302
 488 DP578302 489 DP578302
 490 DP578302 491 DP578302
 492 DP578302 493 DP578302
 494 DP578302 495 DP578302
 496 DP578302 497 DP578302
 498 DP578302 499 DP578302
 500 DP578302 501 DP578302
 502 DP578302 503 DP578302
 504 DP578302 505 DP578302
 506 DP578302 507 DP578302
 508 DP578302 509 DP578302
 510 DP578302 511 DP578302
 512 DP578302 513 DP578302
 514 DP578302 515 DP578302
 516 DP578302 517 DP578302
 518 DP578302 519 DP578302
 520 DP578302 521 DP578302
 522 DP578302 523 DP578302
 524 DP578302 525 DP578302
 526 DP578302 527 DP578302
 528 DP578302 529 DP578302
 530 DP578302 531 DP578302
 532 DP578302 533 DP578302
 534 DP578302 535 DP578302
 536 DP578302 537 DP578302
 538 DP578302 539 DP578302
 540 DP578302 541 DP578302
 542 DP578302 543 DP578302
 544 DP578302 545 DP578302
 546 DP578302 547 DP578302
 548 DP578302 549 DP578302
 550 DP578302 551 DP578302
 552 DP578302 553 DP578302
 554 DP578302 555 DP578302
 556 DP578302 557 DP578302
 558 DP578302 559 DP578302
 560 DP578302 561 DP578302
 562 DP578302 563 DP578302
 564 DP578302 565 DP578302
 566 DP578302 567 DP578302
 568 DP578302 569 DP578302
 570 DP578302 571 DP578302
 572 DP578302 573 DP578302
 574 DP578302 575 DP578302
 576 DP578302 577 DP578302
 578 DP578302 579 DP578302
 580 DP578302 581 DP578302
 582 DP578302 583 DP578302
 584 DP578302 585 DP578302
 586 DP578302 587 DP578302
 588 DP578302 589 DP578302
 590 DP578302 591 DP578302
 592 DP578302 593 DP578302
 594 DP578302 595 DP578302
 596 DP578302 597 DP578302
 598 DP578302 599 DP578302
 600 DP578302 601 DP578302
 602 DP578302 603 DP578302
 604 DP578302 605 DP578302
 606 DP578302 607 DP578302
 608 DP578302 609 DP578302
 610 DP578302 611 DP578302
 612 DP578302 613 DP578302
 614 DP578302 615 DP578302
 616 DP578302 617 DP578302
 618 DP578302 619 DP578302
 620 DP578302 621 DP578302
 622 DP578302 623 DP578302
 624 DP578302 625 DP578302
 626 DP578302 627 DP578302
 628 DP578302 629 DP578302
 630 DP578302 631 DP578302
 632 DP578302 633 DP578302
 634 DP578302 635 DP578302
 636 DP578302 637 DP578302
 638 DP578302 639 DP578302
 640 DP578302 641 DP578302
 642 DP578302 643 DP578302
 644 DP578302 645 DP578302
 646 DP578302 647 DP578302
 648 DP578302 649 DP578302
 650 DP578302 651 DP578302
 652 DP578302 653 DP578302
 654 DP578302 655 DP578302
 656 DP578302 657 DP578302
 658 DP578302 659 DP578302
 660 DP578302 661 DP578302
 662 DP578302 663 DP578302
 664 DP578302 665 DP578302
 666 DP578302 667 DP578302
 668 DP578302 669 DP578302
 670 DP578302 671 DP578302
 672 DP578302 673 DP578302
 674 DP578302 675 DP578302
 676 DP578302 677 DP578302
 678 DP578302 679 DP578302
 680 DP578302 681 DP578302
 682 DP578302 683 DP578302
 684 DP578302 685 DP578302
 686 DP578302 687 DP578302
 688 DP578302 689 DP578302
 690 DP578302 691 DP578302
 692 DP578302 693 DP578302
 694 DP578302 695 DP578302
 696 DP578302 697 DP578302
 698 DP578302 699 DP578302
 700 DP578302 701 DP578302
 702 DP578302 703 DP578302
 704 DP578302 705 DP578302
 706 DP578302 707 DP578302
 708 DP578302 709 DP578302
 710 DP578302 711 DP578302
 712 DP578302 713 DP578302
 714 DP578302 715 DP578302
 716 DP578302 717 DP578302
 718 DP578302 719 DP578302
 720 DP578302 721 DP578302
 722 DP578302 723 DP578302
 724 DP578302 725 DP578302
 726 DP578302 727 DP578302
 728 DP578302 729 DP578302
 730 DP578302 731 DP578302
 732 DP578302 733 DP578302
 734 DP578302 735 DP578302
 736 DP578302 737 DP578302
 738 DP578302 739 DP578302
 740 DP578302 741 DP578302
 742 DP578302 743 DP578302
 744 DP578302 745 DP578302
 746 DP578302 747 DP578302
 748 DP578302 749 DP578302
 750 DP578302 751 DP578302
 752 DP578302 753 DP578302
 754 DP578302 755 DP578302
 756 DP578302 757 DP578302
 758 DP578302 759 DP578302
 760 DP578302 761 DP578302
 762 DP578302 763 DP578302
 764 DP578302 765 DP578302
 766 DP578302 767 DP578302
 768 DP578302 769 DP578302
 770 DP578302 771 DP578302
 772 DP578302 773 DP578302
 774 DP578302 775 DP578302
 776 DP578302 777 DP578302
 778 DP578302 779 DP578302
 780 DP578302 781 DP578302
 782 DP578302 783 DP578302
 784 DP578302 785 DP578302
 786 DP578302 787 DP578302
 788 DP578302 789 DP578302
 790 DP578302 791 DP578302
 792 DP578302 793 DP578302
 794 DP578302 795 DP578302
 796 DP578302 797 DP578302
 798 DP578302 799 DP578302
 800 DP578302 801 DP578302
 802 DP578302 803 DP578302
 804 DP578302 805 DP578302
 806 DP578302 807 DP578302
 808 DP578302 809 DP578302
 810 DP578302 811 DP578302
 812 DP578302 813 DP578302
 814 DP578302 815 DP578302
 816 DP578302 817 DP578302
 818 DP578302 819 DP578302
 820 DP578302 821 DP578302
 822 DP578302 823 DP578302
 824 DP578302 825 DP578302
 826 DP578302 827 DP578302
 828 DP578302 829 DP578302
 830 DP578302 831 DP578302
 832 DP578302 833 DP578302
 834 DP578302 835 DP578302
 836 DP578302 837 DP578302
 838 DP578302 839 DP578302
 840 DP578302 841 DP578302
 842 DP578302 843 DP578302
 844 DP578302 845 DP578302
 846 DP578302 847 DP578302
 848 DP578302 849 DP578302
 850 DP578302 851 DP578302
 852 DP578302 853 DP578302
 854 DP578302 855 DP578302
 856 DP578302 857 DP578302
 858 DP578302 859 DP578302
 860 DP578302 861 DP578302
 862 DP578302 863 DP578302
 864 DP578302 865 DP578302
 866 DP578302 867 DP578302
 868 DP578302 869 DP578302
 870 DP578302 871 DP578302
 872 DP578302 873 DP578302
 874 DP578302 875 DP578302
 876 DP578302 877 DP578302
 878 DP578302 879 DP578302
 880 DP578302 881 DP578302
 882 DP578302 883 DP578302
 884 DP578302 885 DP578302
 886 DP578302 887 DP578302
 888 DP578302 889 DP578302
 890 DP578302 891 DP578302
 892 DP578302 893 DP578302
 894 DP578302 895 DP578302
 896 DP578302 897 DP578302
 898 DP578302 899 DP578302
 900 DP578302 901 DP578302
 902 DP578302 903 DP578302
 904 DP578302 905 DP578302
 906 DP578302 907 DP578302
 908 DP578302 909 DP578302
 910 DP578302 911 DP578302
 912 DP578302 913 DP578302
 914 DP578302 915 DP578302
 916 DP578302 917 DP578302
 918 DP578302 919 DP578302
 920 DP578302 921 DP578302
 922 DP578302 923 DP578302
 924 DP578302 925 DP578302
 926 DP578302 927 DP578302
 928 DP578302 929 DP578302
 930 DP578302 931 DP578302
 932 DP578302 933 DP578302
 934 DP578302 935 DP578302
 936 DP578302 937 DP578302
 938 DP578302 939 DP578302
 940 DP578302 941 DP578302
 942 DP578302 943 DP578302
 944 DP578302 945 DP578302
 946 DP578302 947 DP578302
 948 DP578302 949 DP578302
 950 DP578302 951 DP578302
 952 DP578302 953 DP578302
 954 DP578302 955 DP578302
 956 DP578302 957 DP578302
 958 DP578302 959 DP578302
 960 DP578302 961 DP578302
 962 DP578302 963 DP578302
 964 DP578302 965 DP578302
 966 DP578302 967 DP578302
 968 DP578302 969 DP578302
 970 DP578302 971 DP578302
 972 DP578302 973 DP578302
 974 DP578302 975 DP578302
 976 DP578302 977 DP578302
 978 DP578302 979 DP578302
 980 DP578302 981 DP578302
 982 DP578302 983 DP578302
 984 DP578302 985 DP578302
 986 DP578302 987 DP578302
 988 DP578302 989 DP578302
 990 DP578302 991 DP578302
 992 DP578302 993 DP578302
 994 DP578302 995 DP578302
 996 DP578302 997 DP578302
 998 DP578302 999 DP578302
 999 DP578302 1000 DP578302

1:1000
 0 10 20 30 40 50
 AHD
 EKS
 PW51619

Doherty Smith & Associates
 CONSULTING SURVEYORS
 www.dohertysmith.co.nz
 info@dohertysmith.co.nz

Job No. 13027
 Date 01/04/15
 Drawn by ZAS
 Checked by EKS
 Approved by EKS

Client MR TONY BIRD
 Project LOT 1 & 2 DP1115930, LOT 11, DP844379
 LOT 19, DP130774 & LOT 20, DP556633
 JASMINE DRIVE, MONTEFIORES

Plan Title DRAINAGE STRATEGY
 EXISTING SITE PLAN
 WITH LOT LAYOUT

Drawing No. 13027-S06
 Revision B
 Sheet 1 OF 1

DOHERTY SMITH & ASSOCIATES

ERIC SMITH

Your Reference: DP1115930

Our Reference: 2017M7100(418)

Friday, 31 March 2017

Re: Plan of Road Closure within DP1115930 at Montefiores

I refer to your email of 31 March 2017 and advise that current LPI practice requires that the road that is intended to be closed must be identified as a lot in plan (and not include any adjoining land) and lodged as a Road Closure Plan under the Roads Act, 1993 . As it is intended to close the entirety of the road shown in DP1115930, a compiled plan will be acceptable in this instance.

The Deposited Plan requires the consent of the Crown Lands together with a completed CL 45-36 Form. This is followed by appropriate Gazettal action in terms of the Lot and Deposited Plan and the lodgement of a Request Form 11R to record the affect of the gazettal action on the title.

If you require any further information in regard to this matter please contact Peter Tesoriero on telephone (02) 9228 6817.

Darren Peters

Director, Titling & Plan Services

