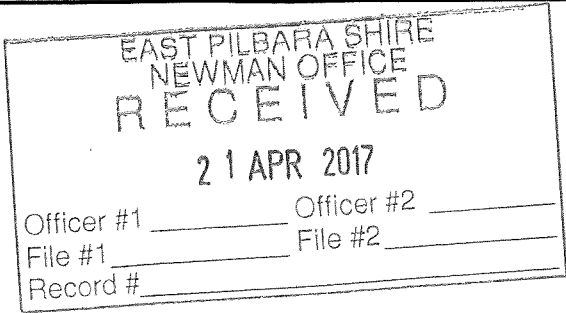


Building Surveyor



AMCOL SIGNATURE	
DATE	
AM MODULAR SIGNATURE	
DATE	

SPECIFICATION

NOTE:
ALL COLOURS AND BRANDS OF MATERIALS SHOULD BE ADHERED TO OR A
SIMILAR APPROVED OPTION PROVIDED

Chassis / Floor

Specification : Welded Steel Chassis to Engineer Approved Detail
Paint Finish : To Engineer Approved Detail
Floor Joists :
• Generally – 118 x 40 x 1.2mm C Section Steel Channel at Nominal 400 Centres (Above Chassis Members)
• Cool Room / External Condenser Recess – 75 x 40 x 1.6mm C Section Steel Channel at Nominal 400 Centres (Between Chassis Members)
Floor Loading : Minimum 5kPa, Engineer to Confirm
Floor Lining :
• Generally, Bottom To Top (All Above Chassis Members) – 6.5mm Bubble Foil (With Tape Seal at Joins/Openings) and 2 Layers of 18mm CFC Board Liquid Nalled Together and Mechanically Fixed to Floor Joists Below
• Cool Room / External Condenser Recess, Bottom to Top,
– Between Chassis Members, 18mm CFC Board
– Above Chassis Members, 6.5mm Bubble Foil, 150mm Polyurethane Insulation Panel to Suit Cool / Freezer Room (to Refrigeration Specialist Specification)
Floor Covering :
• Cleaner's Store, WC's, Bar & Wet Mess – 2.0mm Inlaid, Textured, Slip-Resistant, Seamless Sheet Vinyl, Armstrong Colour Karrotha Clay
• Cool Room / External Condenser Unit Recess – 6mm Aluminium Chequer Plate (to Refrigeration Specialist Specification). All Joins and the Perimeter Silicon Sealed
• All Other Areas – 2.0mm Inlaid, Seamless Sheet Vinyl, Armstrong Colour Karrotha Clay
Skirtings :
• Generally (Including Around Posts) – 50 (h) x 19mm (d) PVC Skirting, Colour Brown
• General / Dry / Cleaner's Store and WC's – Vinyl Coved 100mm Up Wall
• Cool Room – None, Perimeter Silicon Sealed
Chassis Floor Joins : 120mm (w) D16 Aluminium Joining Tread Plate, Mill Finish with Pre-drilled Countersunk Holes at 155 Centres
Chassis Floor Join Screws : Countersunk Heads to Suit CFC Flooring, Colour Silver

External Walls

Wall Framing : 100/150 x 40 x 1.0mm C Section Steel Channel
Stud Spacing : 450mm Nominal
Height :
• Columns and Short Side Wall Frames – 2925mm
• Long Side Wall Frames – 2807mm
Wall Insulation : R2.0 Insulation Batt
Thermal Break / Vapour Barrier : 6.5mm Bubble Foil (With Tape Seal at Joins/Openings)
Cladding : 0.42 BMT Corrugated Colorbond, Fixed Horizontally, Colour Almond Beige
Cladding Screw Type : Hex Neo 14 x 10 x 25, Colour Almond Beige
Cladding Fixings Centres : Maximum 600 Horizontally, Every Other Pan Vertically
External Doors : Cyclonic Rated Steel Frames and Doors Complete With Door Closers, Kick Plates and Masterkey Locking System (3 Sets). Door Sealed Against Dust, Noise and Weather Extremes.
Door Size : 2040 (h) x 920 (w) x 50 (d)
Door Finish : Colorbond, Colour Beige
Frame Finish : Dulux Powdercoated, Colour Beige
Door Locks : Escape Sets with Active and Bolted Door (For Double)
Windows : Cyclonic Rated, Aluminium, Green Tinted, Double Glazed (Obscure for WC's), Awning Window Complete with Flyscreen
Window Frame Finish : Magnolia Gloss Powdercoat
Window Internal Reveals : Aluminium Window Surrounds, Colour to Match Internal Walls
Window / Door Opening Trim : 0.55 BMT Colorbond J Mould, Colour Almond Beige
Door / Window Hood Flashing : 0.55 BMT Colorbond, Colour Almond Beige
External / Internal Corner Flashing : 0.55 BMT Colorbond, Colour Almond Beige
Chassis Wall Joins : 0.55 BMT Colorbond J Mould with 0.55 BMT Colorbond Cap, All Colour Almond Beige

Internal Walls

Wall Framing : 100 / 75 x 40 x 1.2mm C Section Steel Channel
Stud Spacing : 450mm Nominal
Height :
• 75mm – 2715mm
• 100mm, Generally – 2807mm
• 100mm, Around Cool Room – 2925mm
Wall Insulation : R2.0 Rockwool Within Internal Walls Around WC's and Office
Wall Linings :
• Generally – 9mm CFC Board with 3.6mm Vinyl Ply Finish, Glued Together and Mechanically Fixed to Wall Frame Panels, Ply Colour Grey
• Around Posts – 18mm CFC Board with 3.6mm Vinyl Ply Finish Glued Together and Mechanically Fixed Around 2 Posts, Ply Colour Grey (Fitted on Site)
• Cool Room – 100mm Polyurethane Insulation Panel to Suit Cool Room (to Refrigeration Specialist Specification)
Lining Fixings :
• Generally – Button Heads to Suit Wall Linings
• Polyurethane Insulation Panels – To Refrigeration Specialist Specification
Ply Join : H Mould, Colour Grey
Sink / Handbasin Splashback Tiling : 200 x 250 Ceramic, Colour White
Internal / External Corner Trims (Including Around Posts): 40 x 40mm Aluminium Angle, Colour Grey
Internal Doors :
• Generally – Metal Door Frame, with Hollow Core Door, fitted with Satin Chrome Lever Passage Sets & Door Closers
• Cleaner's / General / Dry Store / Bar – Metal Door Frame, with Hollow Core Door, fitted with Satin Chrome Lever Escape Sets & Door Closers, Active and Bolted Door for Double Doors
• Cool Room – To Refrigeration Specialist Specification
Door Size :
• Generally – 2040 (h) x 920 (w) x 35 (d)
• Cool Room – 1200 (w) To Refrigeration Specialist Specification
Door / Frame Paint Finish : Low/Zero VOC Semi Gloss, Colour White
Chassis Wall Join : 100mm (w) T-Bar Fixed with Double Sided Tape, Colour Grey

Ceiling

Ceiling Type : Flat
Joists : 100 x 40 x 1.2mm C Section Steel Channel at Nominal 600 Centres
Ceiling Battens : 50mm Ceiling Battens at Nominal 450 Centres
Perimeter Capping / Cornice (Including Around Posts) : 40 x 40mm Aluminium Angle, Colour White
Ceiling Insulation : R2.5 Insulation Batt
Ceiling Lining :
• Generally – 6mm CFC Board with 3.6mm Vinyl Ply Finish, Glued Together and Mechanically Fixed to Ceiling Battens, Ply Colour Mirage Pearl
• Cool Room – 100mm Polyurethane Insulation Panel to Suit Cool Room (to Refrigeration Specialist Specification)
• Condenser Recess – Cladding and Fixings to Match External Walls, Fixed Into Chassis Structure so that Ceiling Ties in with Bottom of Fascia Flashing.
Lining Screws :
• Generally – Button Heads to Suit Wall Linings at Centres to Suit Battens at Nominal 450 Centres
• Polyurethane Insulation Panels – To Refrigeration Specialist Specification
Ply Join : H Mould, Colour White
Chassis Ceiling Join : 120mm (w) D16 Aluminium Joining Plate, Colour White with Pre-drilled Countersunk Holes at 155 Centres
Chassis Ceiling Join Screws : Countersunk Heads to Suit Ceiling Linings, Colour White

Roof

Pitch : 2 Degrees
Overhang at Eaves : 75mm
Roof Lining : 0.42 BMT Colorbond Trimdek, Colour Off White
Roof Lining Screws : M6.5 12 x 55 Roofzip Square Lok Assembly at Maximum 900 Centres, Colour Off White
Roof Purlins : 100 x 40 x 1.9mm C Section Steel Channels at Nominal 400 and 500 Centres, see Structural Drawings for Set Out
Roof Insulation : R1.5 Anticon
Ridge Capping : 0.55 BMT Colorbond, Off White

Ridge Capping Screws : M6.5 12 x 55 RoofZip Multi Assembly at 400 Centres, Colour Off White
Barge Flashing : Flat Profile 0.55 BMT Colorbond, Colour Off White
Fascia Flashing : Profiled 0.55 BMT Colorbond, Colour Off White
Barge / Fascia Screws : M6.5 12 x 55 RoofZip Multi Assembly at 400 Centres, Colour Off White
Fascia Split Flashing : Profile to Match Fascia, 100mm Wide 0.55 BMT Colorbond, Colour Off White
Roof Join Flashing / Cap Flashing : 0.55 BMT Colorbond, Off White
Roof Seal : Super Seal to Fit Trimdek Profile and Silicon

Water Supply

System must be able to Dispense Cold and Hot Water at Mains Pressure with Outlets Fixed to the Sinks/Handbasins. The System must Incorporate Electric Hot Water Storage Water System, Comply with AS2712 and Tested in Accordance with AS4234.

Lighting

External : Outdoor Weatherproof Fluorescent with 'Gold' Insect Repellent Lamps Controlled by Building Mounted Photocell
Internal : Prismatic Diffused Fluorescent Lighting to AS 1680, Emergency to AS/NZS 2293

Power & Data

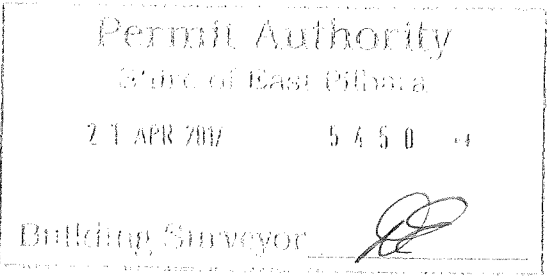
RCD Required for Each Chassis. See drawing 1640-GYM-004 for Layout

Air Conditioning

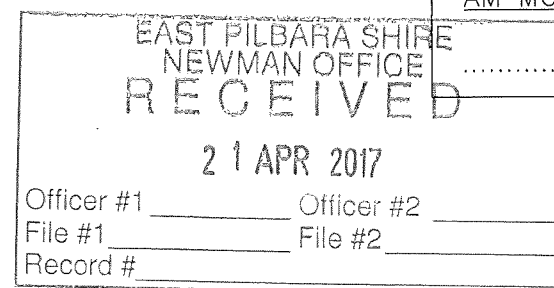
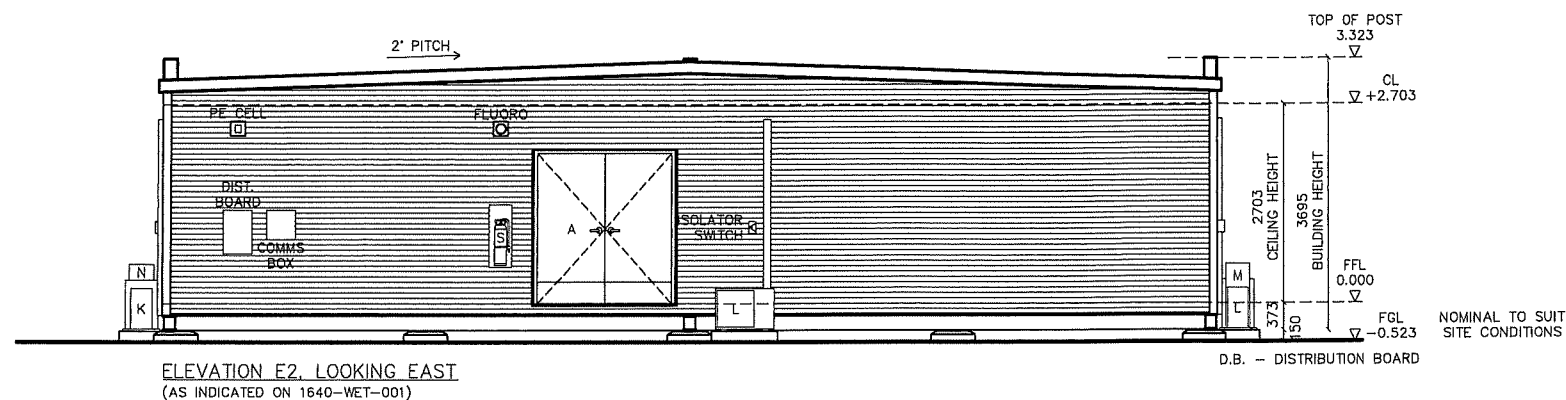
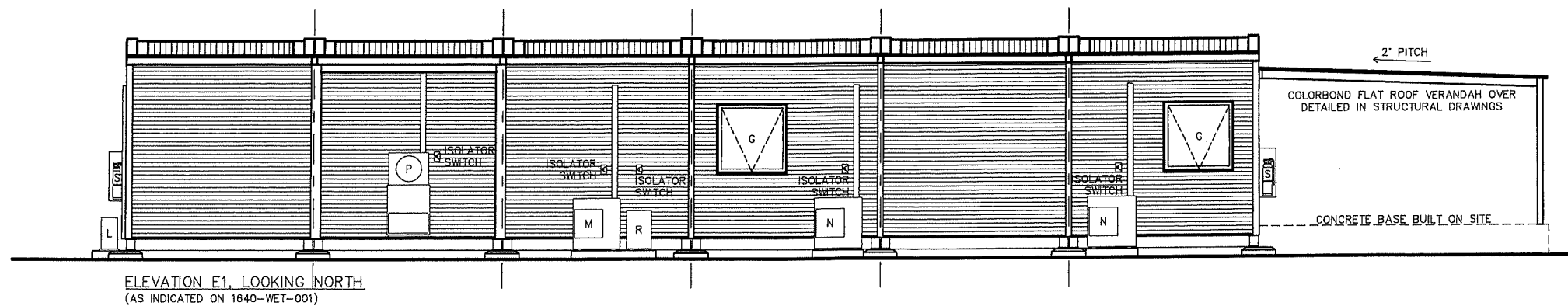
• Generally – Appropriately Sized Mitsubishi Reverse Cycle Split Systems
• Cool Room – Appropriately Sized Chiller Condensing Unit (To Refrigeration Specialist Specification)

Fire Requirements

Equipment in accordance with BCA, AS1670, AS1668 and all Statutory and Approved Authorities including FESA Includes:
• Internal Illuminated 'Exit' Sign
• Fire Extinguishers Where Shown
• Hardwired Smoke Detectors



REVISION	CONSULTANT	DATE	DRAWING NO.	DRAWN BY	SCALE	PROJECT & CLIENT	
E		JULY 2012	1640-WET-001B	KC	NONE	1000 MAN CAMP, AMCO	
ALL DIMENSIONS TO BE CHECKED ON SITE BY CONTRACTOR PRIOR TO COMMENCING WORK. WRITTEN DIMENSIONS TO BE TAKEN IN PREFERENCE TO SCALING DRWS.			DESCRIPTION		SITE ADDRESS		
			WET MESS SPECIFICATION		ROY HILL IRON ORE PROJECT, NEWMAN		

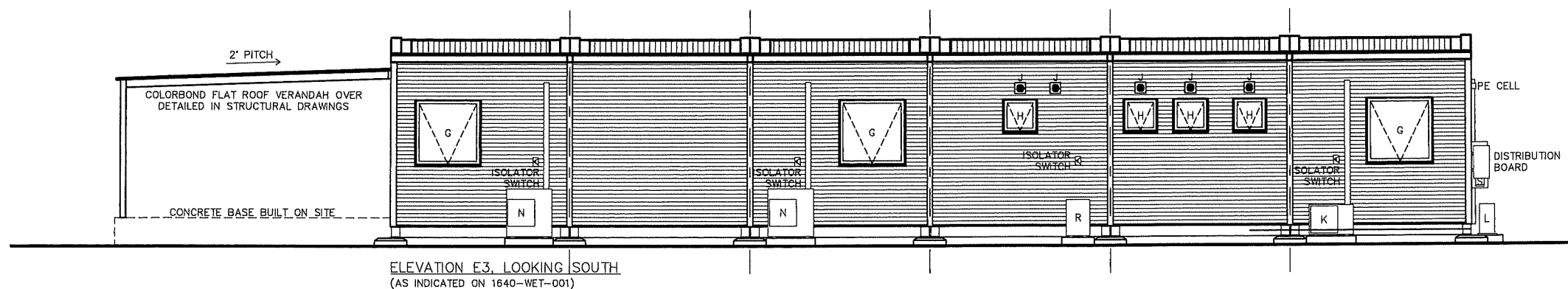


AMCOL SIGNATURE

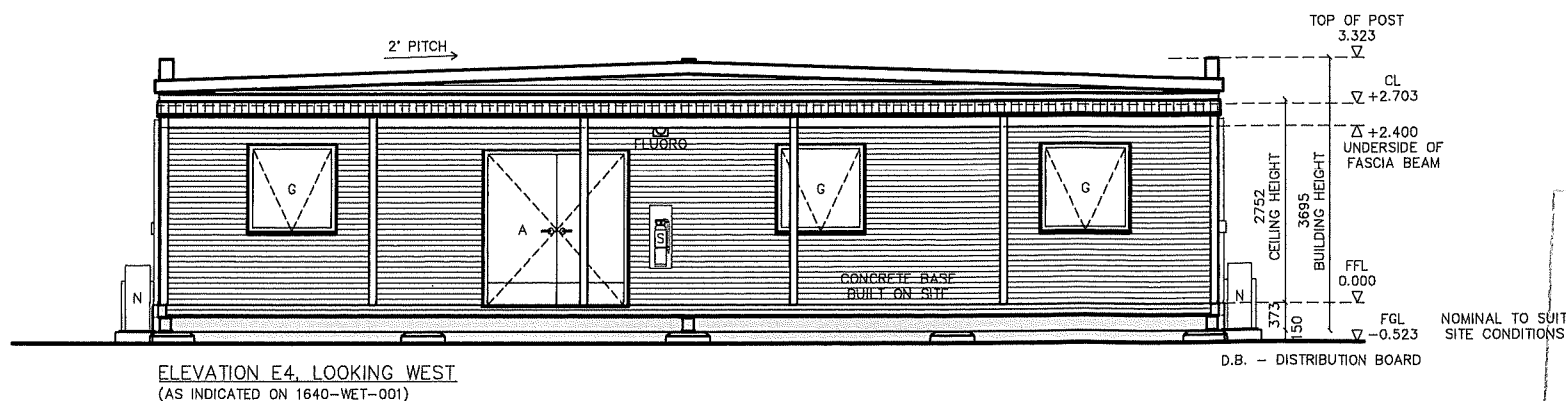
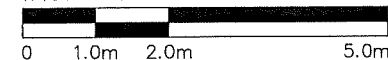
DATE

AM MODULAR SIGNATURE

DATE



1:100 Scale @ A3



ITEM	QTY	DESCRIPTION
A	2	2040 (H) x 920 (W) CYCLONIC DOUBLE STEEL DOORS COMPLETE WITH ESCAPE SETS, CLOSER & KICK PLATES
B	2	2040 (H) x 920 (W) HOLLOW CORE DOUBLE DOORS COMPLETE WITH ESCAPE SETS AND DOOR CLOSER (INTERNAL)
C	8	2040 (H) x 920 (W) HOLLOW CORE SINGLE DOOR COMPLETE WITH PASSAGE SETS AND DOOR CLOSER (INTERNAL)
D	1	2040 (H) x 920 (W) HOLLOW CORE SINGLE DOOR COMPLETE WITH PRIVACY SETS AND DOOR CLOSER (INTERNAL)
E	1	2040 (H) x 920 (W) HOLLOW CORE SINGLE DOOR COMPLETE WITH ESCAPE SETS AND DOOR CLOSER (INTERNAL)
F	1	1200 (W) INSULATED SLIDING DOOR (INTERNAL, TO REFRIGERATION SPECIALIST SPECIFICATION)
G	7	1200 (H) x 1200 (W) DOUBLE GREEN GLAZED WINDOW
H	3	600 (H) x 600 (W) DOUBLE GREEN OBSCURE GLAZED WINDOW
J	4	EXHAUST FANS WITH LOUVER GRILLS (CEILING MOUNTED IN FEMALE WC)
K	1	2.5kW REVERSE CYCLE, SPLIT SYSTEM AIR CONDITIONER
L	2	3.5kW REVERSE CYCLE, SPLIT SYSTEM AIR CONDITIONER
M	1	5kW REVERSE CYCLE, SPLIT SYSTEM AIR CONDITIONER
N	4	8kW REVERSE CYCLE, SPLIT SYSTEM AIR CONDITIONER
P	1	COLD ROOM CHILLER CONDENSING UNIT (TO REFRIGERATION SPECIALIST SPECIFICATION)
R	2	50L ELECTRIC HOT WATER SYSTEM
S	3	4.5kg DRY POWDER FIRE EXTINGUISHER (1 INTERNAL)

Permit Authority

State of Western Australia

21 APR 2017

5 6 5 0

Building Surveyor

REVISION	CONSULTANT	DATE	DRAWING NO.	DRAWN BY	SCALE	PROJECT & CLIENT
D		JULY 2012	1640-WET-002	KC	1:100 @ A3	1000 MAN CAMP, AMCO
ALL DIMENSIONS TO BE CHECKED ON SITE BY CONTRACTOR PRIOR TO COMMENCING WORK. WRITTEN DIMENSIONS TO BE TAKEN IN PREFERENCE TO SCALING DRWGS.			DESCRIPTION		SITE ADDRESS	
			WET MESS ELEVATIONS		ROY HILL IRON ORE PROJECT, NEWMAN	

AMCOL SIGNATURE

DATE

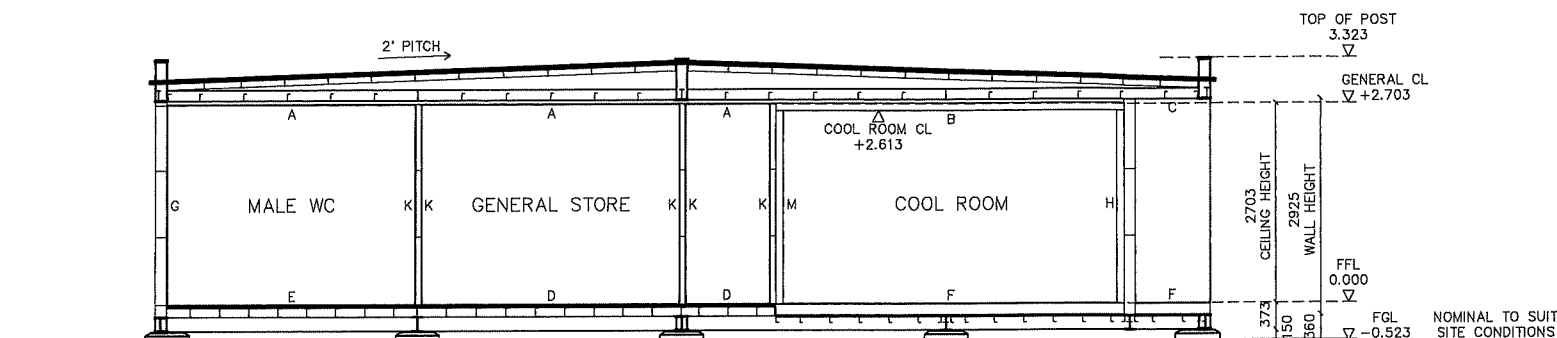
AM MODULAR SIGNATURE

DATE

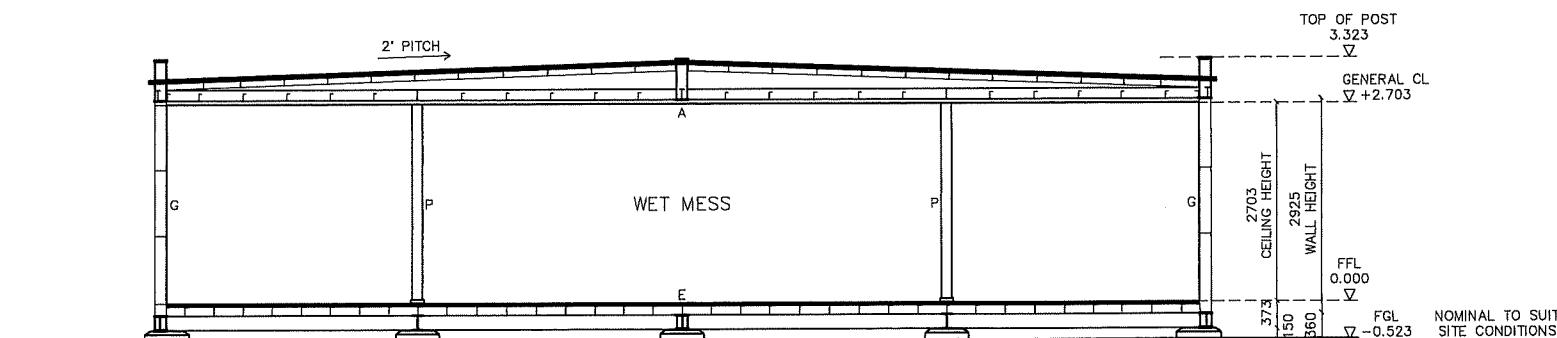
EAST PILBARA SHIRE
NEWMAN OFFICE
RECEIVED

21 APR 2017

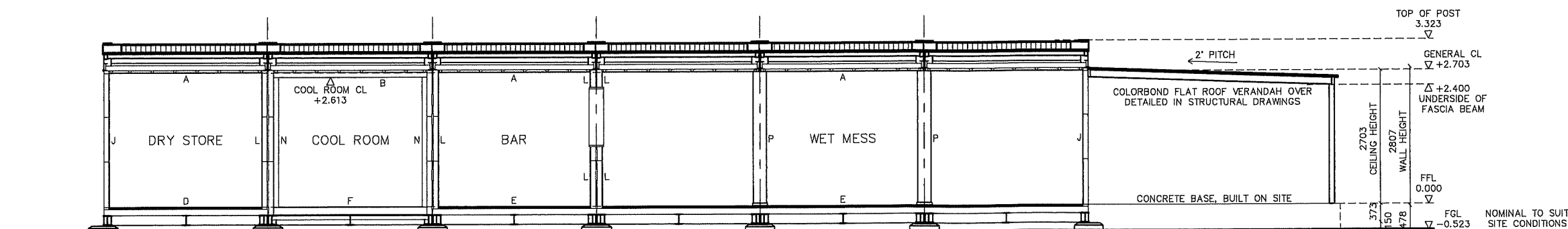
Officer #1 _____ Officer #2 _____
File #1 _____ File #2 _____
Record # _____



SECTION S1, LOOKING EAST
(AS INDICATED ON 1640-WET-001)



SECTION S2, LOOKING EAST
(AS INDICATED ON 1640-WET-001)



SECTION S3, LOOKING NORTH
(AS INDICATED ON 1640-WET-001)

KEY	
ITEM	DESCRIPTION
A	1 LAYER OF 8mm CFC BOARD WITH 3.6mm PLY FINISH ON 50mm CEILING BATTENS CONNECTED TO 100 x 40 x 1.2 CEILING JOISTS
B	100mm POLYURETHANE INSULATED PANEL FIXED TO 50mm CEILING BATTENS CONNECTED TO 100 x 40 x 1.2 CEILING JOISTS
C	CORRUGATED WALL CLADDING FIXED TO CEILING STRUCTURE
D	FLOOR BUILD UP TOP TO BOTTOM (ALL LAYERS ABOVE CHASSIS): <ul style="list-style-type: none">- 2mm STANDARD VINYL- 2 LAYERS OF 18mm CFC- 6.5mm BUBBLE FOIL- 118 x 40 x 1.2 FLOOR JOIST
E	FLOOR BUILD UP TOP TO BOTTOM (ALL LAYERS ABOVE CHASSIS): <ul style="list-style-type: none">- 2mm TEXTURED VINYL- 2 LAYERS OF 18mm CFC- 6.5mm BUBBLE FOIL- 118 x 40 x 1.2 FLOOR JOIST
F	FLOOR BUILD UP TOP TO BOTTOM: ABOVE CHASSIS MEMBERS <ul style="list-style-type: none">- 6mm CHEQUER PLATE- 150mm POLYURETHANE INSULATION PANEL- 6.5mm BUBBLE FOIL BETWEEN CHASSIS MEMBERS <ul style="list-style-type: none">- 18mm CFC BOARD- 75 x 40 x 1.6 FLOOR JOIST
G	1 LAYER OF 9mm CFC BOARD WITH 3.6mm PLY FINISH ON 150 x 40 x 1.0 EXTERNAL WALL
H	100mm POLYURETHANE INSULATION PANEL ON 150 x 40 x 1.0 EXTERNAL WALL
J	1 LAYER OF 9mm CFC BOARD WITH 3.6mm PLY FINISH ON 100 x 40 x 1.0 EXTERNAL WALL
K	1 LAYER OF 9mm CFC BOARD WITH 3.6mm PLY FINISH ON 75 x 40 x 1.0 INTERNAL WALL
L	1 LAYER OF 9mm CFC BOARD WITH 3.6mm PLY FINISH ON 100 x 40 x 1.0 INTERNAL WALL
M	100mm POLYURETHANE INSULATION PANEL ON 75 x 40 x 1.0 INTERNAL WALL
N	100mm POLYURETHANE INSULATION PANEL ON 100 x 40 x 1.0 INTERNAL WALL
P	2 100 x 100 x 6 POSTS WITH 18mm CFC BOARD AND 3.6mm PLY FINISH CASING (FITTED ON SITE)

Permit Authority

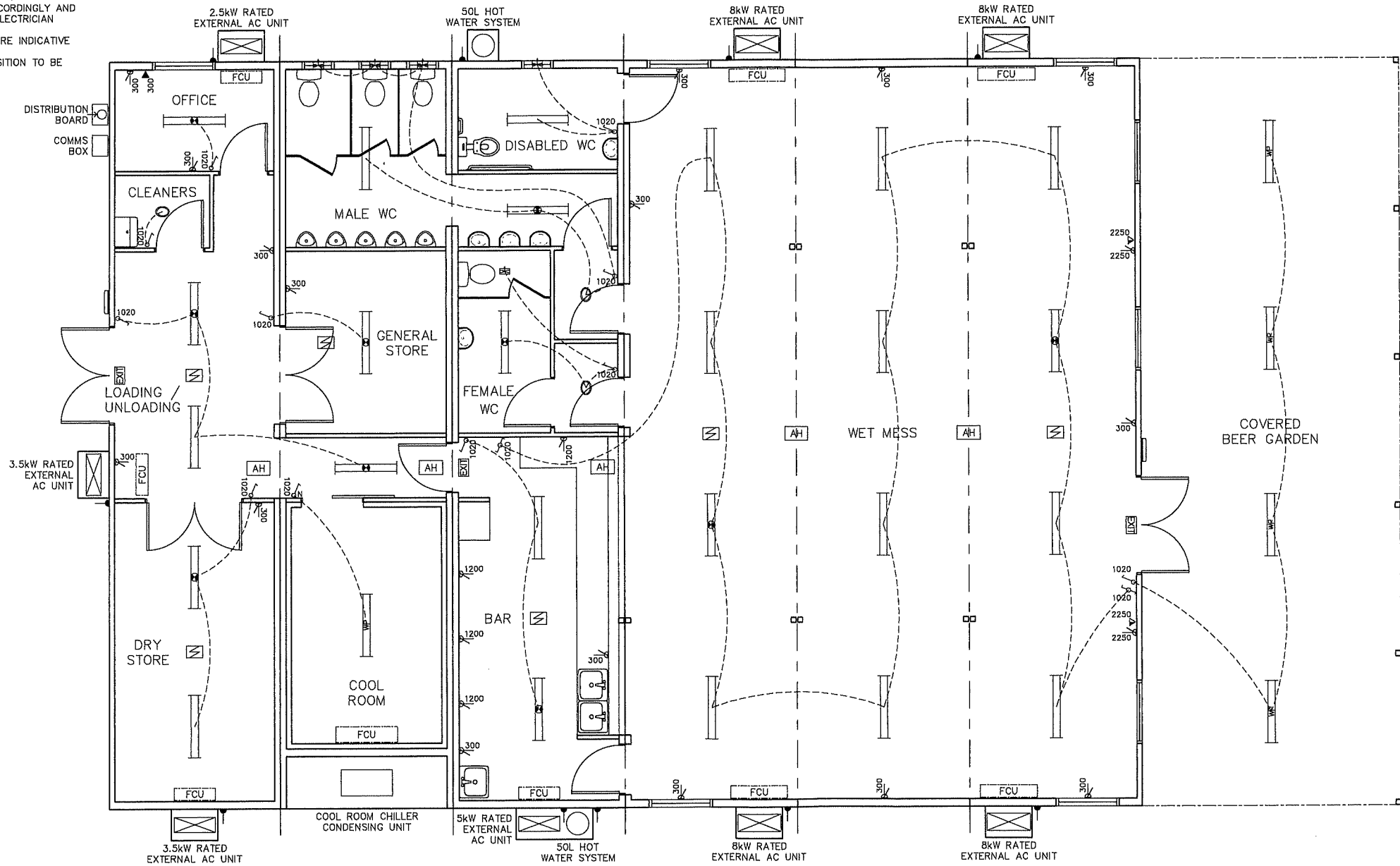
21 APR 2017 5 4 5 0

Building Surveyor

REVISION	CONSULTANT	DATE	DRAWING NO.	DRAWN BY	SCALE	PROJECT & CLIENT
B		AUGUST 2012	1640-WET-003	KC	1:100 @ A3	1000 MAN CAMP, AMCO
DESCRIPTION						SITE ADDRESS
WET MESS SECTIONS						ROY HILL IRON ORE PROJECT, NEWMAN

ELECTRICAL LEGEND			
MK	DESCRIPTION	MK	DESCRIPTION
IS	ISOLATION SWITCH	2 x 35W FLUORO WITH EMERGENCY BATTERY BACKUP	
SG	SINGLE GPO (SEE NOTE BELOW)	2 x 35W FLUORO	
DG	DOUBLE GPO (SEE NOTE BELOW)	2 x 35W FLUORO, WEATHER PROOF	
SD	SINGLE DATA/PHONE POINT	O	OYSTER LIGHT
DD	DOUBLE DATA/PHONE POINT	SL	SINGLE LIGHT SWITCH (N = NEON INDICATOR)
TV	TV CONNECTION (H = + HDMI, D = + DATA)	TW	TWO WAY LIGHT SWITCH
SC	SPEAKER CONNECTION	EXIT	CEILING MOUNTED EXIT SIGN
300 FM	MOUNTING HEIGHT ABOVE FFL	EW	EXTERNAL WALL MOUNTED FLUORESCENT LUMINAIRE
FB	FLOOR BOX	PC	PE CELL
CM	CEILING MOUNTED	EF	EXHAUST FAN
CS	CEILING MOUNTED SPEAKER	AH	ACCESS HATCH
HS	HARDWIRED SMOKE DETECTOR WITH BATTERY BACKUP		

- NOTES
- GPO'S GENERALLY RATED AT 10A, HOWEVER WHERE EQUIPMENT REQUIRES A HIGHER RATING (EG. 15A), PROVIDE ACCORDINGLY AND ADDITIONALLY IF NECESSARY. TO BE REVIEWED BY ELECTRICIAN
 - RCD REQUIRED PER CHASSIS
 - GPO HEIGHTS SHOWN BUT POSITION ALONG WALLS ARE INDICATIVE BUT SHOULD BE ADHERED TO WHERE POSSIBLE
 - ACCESS HATCH POSITIONS SHOWN INDICATIVELY, POSITION TO BE DETERMINED IN MANUFACTURE



AMCOL SIGNATURE

DATE

AM MODULAR SIGNATURE

DATE

EAST PILBARA SHIRE

NEWMAN OFFICE

RECEIVED

21 APR 2017

Officer #1

Officer #2

File #1

File #2

Record #

Permit Authority

Shire of East Pilbara

21 APR 2017

5450

Building Surveyor



REVISION	CONSULTANT	DATE	DRAWING NO.	DRAWN BY	SCALE	PROJECT & CLIENT
C		JULY 2012	1640-WET-004	JC	1:100 @ A3	1000 MAN CAMP, AMCO
ALL DIMENSIONS TO BE CHECKED ON SITE BY CONTRACTOR PRIOR TO COMMENCING WORK. WRITTEN DIMENSIONS TO BE TAKEN IN PREFERENCE TO SCALING DRWGS.			DESCRIPTION		SITE ADDRESS	
			WET MESS ELECTRICAL PLAN		ROY HILL IRON ORE PROJECT, NEWMAN	

NOTE:
PLEASE ENSURE ALL WATER SERVICES ARE CONNECTED
INTERNALLY WITH ONE SITE CONNECTION

AMCOL SIGNATURE

DATE

AM MODULAR SIGNATURE

DATE

EAST PILBARA SHIRE
NEWMAN OFFICE
RECEIVED

21 APR 2017

Officer #1 _____ Officer #2 _____
File #1 _____ File #2 _____
Record # _____

Permit Authority
Shire of East Pilbara

21 APR 2017 5 4 5 0

Building Surveyor

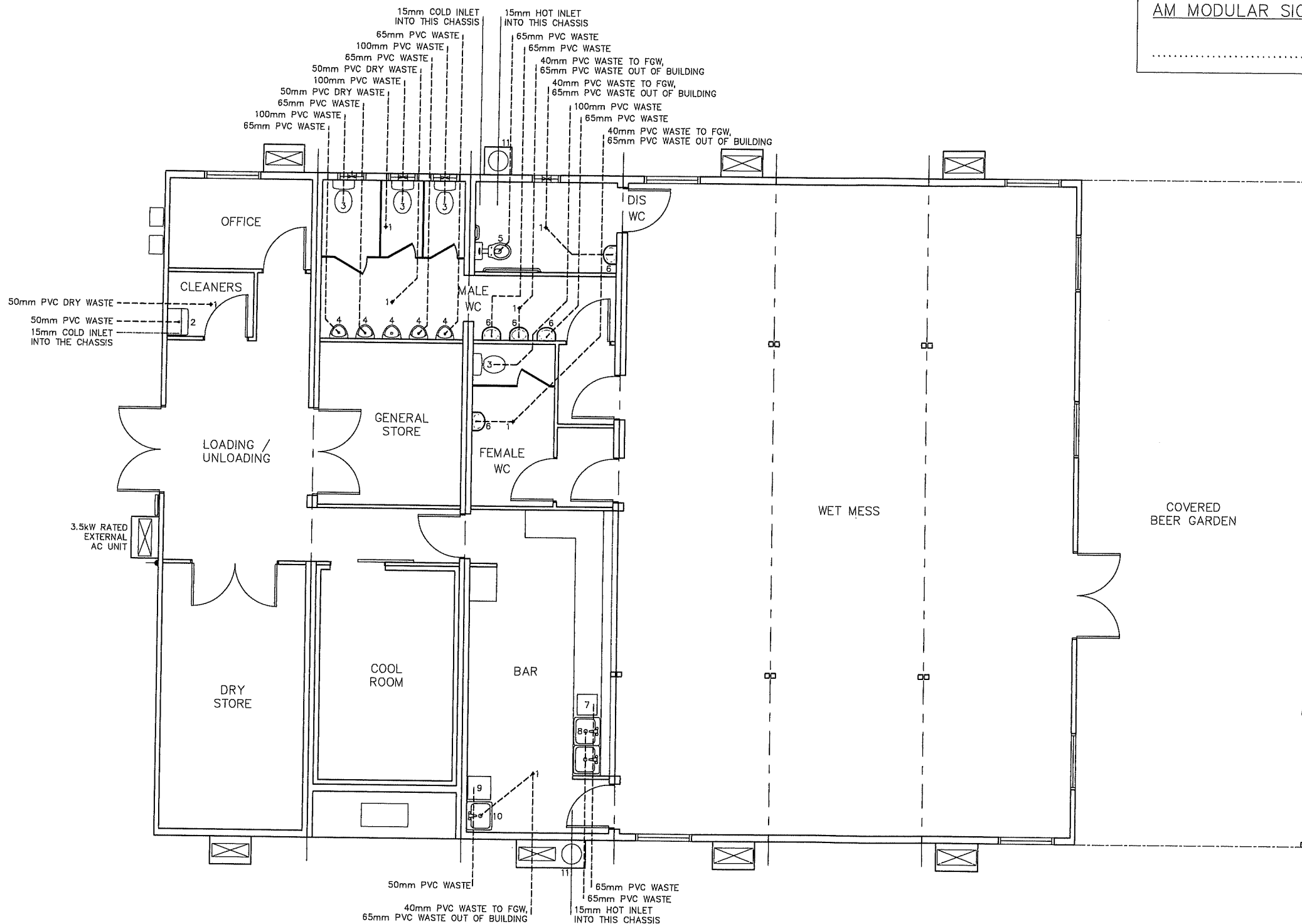
1:100 Scale @ A3

0 1.0m 2.0m 5.0m



EQUIPMENT REQUIRING PLUMBING KEY

ITEM	QTY	DESCRIPTION
1	6	FLOOR WASTE GULLEY
2	1	CLEANER'S SINK
3	4	WC SUITE COMPLETE WITH PAN, SEAT AND DUEL FLUSH CISTERN
4	5	SS WALL HUNG URINAL COMPLETE WITH MANUAL CISTERN
5	1	DISABLED WC SUITE COMPLETE WITH PAN, SEAT AND DUEL CISTERN (GAP UNDER CUBICLE PARTITIONS TO ALLOW DRAINAGE TO FGW)
6	5	450 (W) HAND BASIN COMPLETE WITH MIXER TAP
7	1	GLASSWASHER / LIGHT DUTY DISHWASHER
8	1	SS DOUBLE BOWL SINK COMPLETE WITH MIXER TAP AND
9	1	ICE MACHINE WITH FILTER, 78kg PRODUCTION, AND 48kg STORAGE
10	1	SS HAND BASIN COMPLETE WITH MIXER TAP WITH SENSOR OPERATION
11	2	SOL ELECTRIC HOT WATER SYSTEM



REVISION	CONSULTANT	DATE	DRAWING NO.	DRAWN BY	SCALE	PROJECT & CLIENT
E		JULY 2012	1640-WET-005	BK	1:100 @ A3	1000 MAN CAMP, AMCO
DESCRIPTION						SITE ADDRESS
WET MESS PLUMBING PLAN						ROY HILL IRON ORE PROJECT, NEWMAN