



Inspection Type

Insurance re-newel

Name

Date

26/11/2024

Location

Gladesv Bridge Marina

Make and Model

Princess 50

Vessel Registration

1489N

Vessel Name

Coma II

Hull Identification Number

GB-MPRN4017D101

Photographs



Hull

Underwater Surface / Antifoul

Accept

Bow Thruster

Other

Note

Propeller broken

Transom

Accept

Gunwale Strip

Accept

Photographs

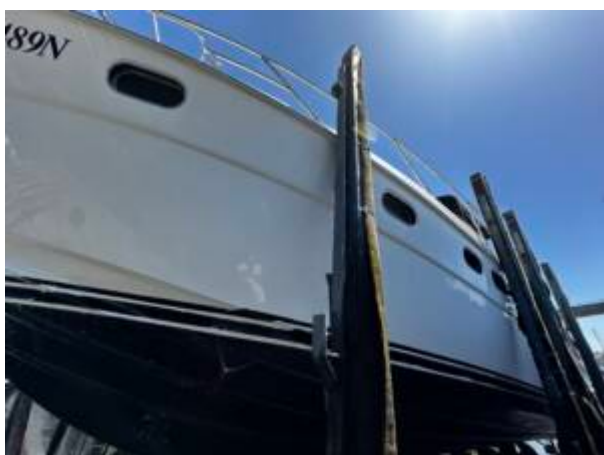


Topsides

Topsides

Glossy

Photographs



Cathodic Protection

Hull Anodes

Good Condition

Trim Tab Anodes

Depleted

Photographs



Through Hull Fittings

Ball valve / Sea cocks / Gate valve

Operational

Hose clamps

Accept

Photographs



Deck / Superstructure

Foredeck

Glossy

Superstructure side

Glossy

Bow Rail

Secure

Deck fillers

Other

Note

Seal previous holes for waste deck fitting

Companion way door

Operational

Photographs



Covers / Upholstery / Fit out

Cockpit upholstery

Good condition

Cockpit Carpet

N/A

Saloon upholstery

Good condition

Doors and catches

Good condition

Cupboards and catches

Good condition

Bimini

Good condition

Photographs





Anchor System

Anchor

Accept

Chain

Accept

Winch

Operational

Swivel

N/A

Bow sprit

Accept

Photographs



12 / 24 Volt Electrical

Battery switches

Operational

Batteries

Accept

Note

New

Navigation lights

Operational

White light

Operational

Cockpit fridge

Operational

Fresh water system

Operational

Bilge pumps

Operational

Float switches

Operational

Horn

Inoperable

Photographs



240V Electrical System

Tanks

Fuel tanks

Accept where visible / accessible

Starboard Engine and Drive system

Engine make and model

Volvo TAM75

Engine appearance

Good

Sea strainer

Accept

Exhaust system

Non Accept

Note

Exhaust tube at transom delaminating from

Hoses and clamps

Accept

Throttle operation

Accept

Propeller shaft seal

Accept

Stern tube

Accpet

Propeller shaft bearing

Accept

P-bracket / Skeg

Accept

Propellers

Accept

Photographs



Centre Engine and Drive System

Port Engine and Drive System

Engine make and model

Volvo TAMD75

Engine appearance

Good

Sea strainer

Accept

Exhaust system

Non Accept

Note

Exhaust tube delaminating from hull and leaking

Hoses and clamps

Accept

Propeller shaft seal

Accept

Stern tube

Accept

Propeller shaft bearing

Accept

P-bracket / Skeg

Accept

Propellers

Accept

Photographs



Steering System

Steering wheel

Accept

Steering helm

Accept

Ram / Tube

Accept

Rudders

Accept

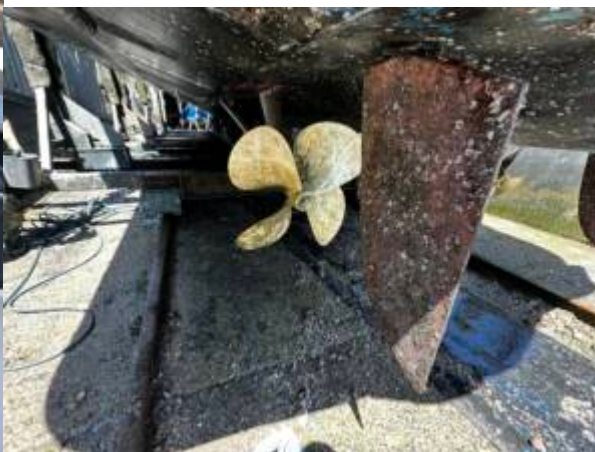
Rudder glands / seals

Accept

Rudder bearings

Accept

Photographs



Generator

Generator Make

Kholer

Generator appearance

Good

Photographs**Water Test**

Trailer

Sailing Yachts

Notes and Recommendations**Coma II**

- Oil noted under engines. Clean bilge
- Re-glass engine exhaust tubes as delaminating from hull
- Horn inoperable

Disclaimer

This report has been prepared specifically for on 26/11/24 and is for his use only. Copies in whole or in part should not be released to or consulted by, other parties without the express prior written consent of Joe Serhan, The Boat Inspector.

This report is issued without prejudice. In our opinion, the report constitutes a statement of the condition of the vessel and her equipment at the time that the inspection was carried out.

This report implies no warranties, guarantees, or safeguards against any subsequent, latent or undiscovered defects sighted or unsighted and in inaccessible areas.

Areas requiring the removal of panels or interfering with the vessel's structure have not been inspected and no responsibility or liability is accepted and or implied.

Although all due diligence and care have been expressed and carried out in the correlation of data for this report no warranties or liabilities are expressed or accepted by The Boat Inspector.

This report is based on the condition of the aforementioned vessel at the time of the inspection only and valid for the time of the inspection only.

Joe Serhan - Marine Surveyor

[The Boat Inspector - Pre-Purchase & Insurance Inspections](#)