



## **DISCLAIMER: Second-Hand Plant Condition and Safety**

This document is Jungheinrich Australia Pty Ltd's (**Jungheinrich**) official notice that the second-hand plant offered for sale through this transaction (direct sale or auction) may contain faults or deficiencies that could pose risks to health and safety.

### **Important Information**

#### **Safety & Compliance of the Plant**

Given the plant is second-hand, please be aware it may include wear and tear, or be missing safety features that were not present or required at the time of original manufacture.

Jungheinrich has taken all reasonably practicable steps to identify any faults in the plant. The **enclosed** Condition Report sets out the current condition of this plant, including any identified faults.

While all efforts have been made to identify faults, there may be other faults present that did not show up at time of inspection

#### **Operational Safety Notice**

The plant should not be used until all identified faults have been rectified and the equipment is deemed safe for operation.

It is the responsibility of the purchaser to ensure that the plant is inspected, serviced, and, if necessary, modified to meet current safety standards before use.

By participating in this sale and purchasing the second-hand plant, the purchaser acknowledges receipt of this notice and accepts full responsibility for ensuring the plant is safe for use.

#### **Operating condition of the plant**

Note: this condition report is a safety report only and does not represent overall appearance or operating condition of the plant

For any questions please contact Jungheinrich



## Used Sale Safety & Compliance Check

MHE-000082 / 112951 / Chandana Paris / 17/10/2025 /  
Jungheinrich / ETV214

Complete

Flagged items

0

Report ID

MHE-000082

Technician Name

Chandana Paris

Conducted on

17/10/2025 1:26 PM AEDT

Branch

Melbourne

Unit Details

Equipment No.

112951

Brand

Jungheinrich

Model

ETV214



Photo 1

Include Images of the Front, Rear & Sides of the Unit



Photo 2



Photo 3

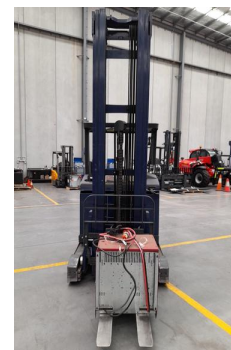


Photo 4



Photo 5

## Observations Summary

<b>Truck Category</b>	Category 5 - Electric Reach Truck
<b>Emergency Stop, Horn/Warning device, lights, reverse alarm and flashing lights operational</b>	Yes
<b>Foot switch allows operation only when depressed</b>	Yes
<b>Seat switch and seat belt operate sequentially (site dependent)</b>	N/A
<b>Mast switch operation for travel speed reduction to 3km/h above specified height</b>  Mast switch functioning. Lift height speed need to be set to 3 km/h. Now 5km/h	Yes
<b>Are brakes and park brake functioning correctly?</b>	Yes
<b>Are tyre treads within limits and/or free from damage?</b>  Minor damages on load wheels. No Flat spot	Yes
<b>Are fork tynes in good condition and within specification?</b>  Acceptable condition	Yes
<b>Are mast chains in good condition, within specification and working correctly?</b>  Free lft - 0.5% Secondary- 0.3%	Yes
<b>Are all controls inc. lift, tilt &amp; sideshift/auxilliary functions working correctly</b>	Yes
<b>Confirm safety systems not bypassed or malfunctioning?</b>  RCT need to be taken off and connect direct to key switch	Yes

## Additional Observations & Actions

**List any other notable defects or faults e.g. ROPS/FOPS damage etc.**

No impact damages

---

### Technician Sign off



Paris  
17/10/2025 1:48 PM AEDT

---

Media summary

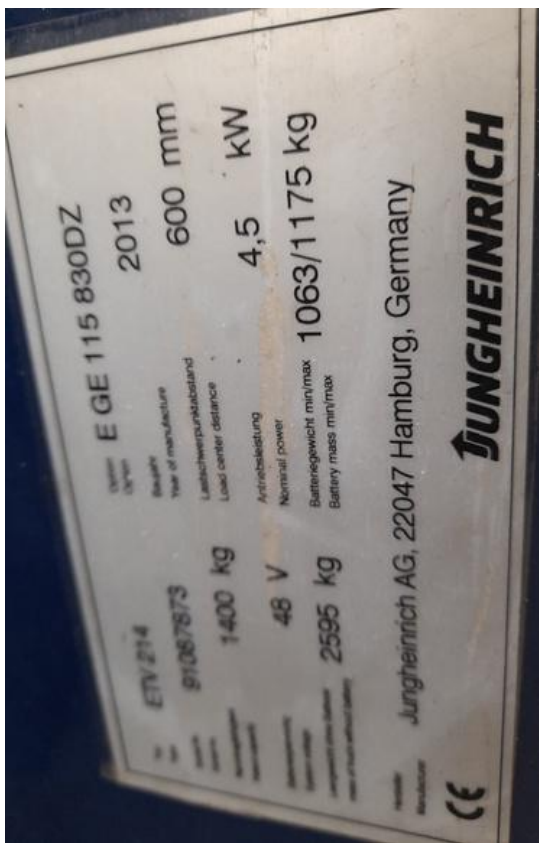


Photo 1



Photo 2



Photo 3



Photo 4



Photo 5