



#### **DISCLAIMER: Second-Hand Plant Condition and Safety**

This document is Jungheinrich Australia Pty Ltd's (Jungheinrich) official notice that the second-hand plant offered for sale through this auction may contain faults or deficiencies that could pose risks to health and safety.

#### **Important Information**

##### **Condition of the Plant**

Given the plant is second-hand, please be aware it may include wear and tear, or be missing safety features that were not present or required at the time of original manufacture.

Jungheinrich has taken all reasonably practicable steps to identify any faults in the plant. The enclosed Condition Report sets out the current condition of this plant, including any identified faults.

Identified specific faults are included in the supplied condition report.

##### **Operational Safety Notice**

It is the responsibility of the purchaser to ensure that the plant is inspected, serviced, and, if necessary, modified to meet current safety standards before use. The plant should not be used until all identified faults have been rectified and the equipment is deemed safe for operation.

##### **Manufacturer Information and Records**

Any available records, including:

- information concerning each purpose for which the plant was designed or manufactured;
- information concerning any conditions necessary to ensure that the plant is without risks to health and safety when used for the purposes for which it was designed or manufactured or when carrying out any activity; and
- calculations, analysis or testing records, including data sheets, test certificates, operation manuals, service reports, and safety manuals or guides are enclosed with the plant. Purchasers are encouraged to review this documentation thoroughly.

By participating in this auction and purchasing the second-hand plant, the purchaser acknowledges receipt of this notice and accepts full responsibility for ensuring the plant is safe for use.

For any questions please contact Jungheinrich

## De-Hire Inspection Check

31/05/2025 / 383033 / Sydney / UE / Battery Electric / FN456127 /  
Bal Krishna

Complete

Serial Number

FN456127



Photo 1



Photo 2

Hour Meter Read

6653 hr



Photo 3

Service Job No.

383033

Location

Sydney

Conducted on

31/05/2025 8:11 AM ACST

Conducted By

Bal Krishna

Truck Category

UE

Truck Make

Battery Electric



Photo 4

## Equipment Exterior

### General Appearance / Paintwork

OK



Photo 5



Photo 6



Photo 7



Photo 8

### Include Images of the Front, Rear & Sides of the Unit



Photo 9



Photo 10



Photo 11



Photo 12



Photo 13



Photo 14



Photo 15

## Wheels/Tyres

### Front Wheels / Tyres

OK



Photo 16



Photo 17

### Rear Wheels / Tyres

OK



Photo 18



Photo 19



Photo 20





Photo 21

**Wheel Bearings**

OK

**Chassis/Structure**

**Overhead Guard**

OK



Photo 22



Photo 23



Photo 24

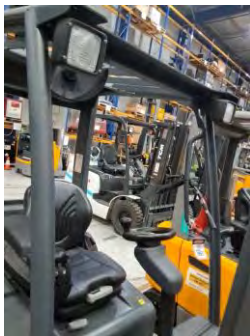


Photo 25

**Chassis**

OK



Photo 26

Battery Cover

OK



Photo 27

Driver Seat & Fixing

OK



Photo 28



Photo 29

Panels and Covers (Left & Right)

OK



Photo 30



Photo 31

Accessories (Mirrors, Blue Lights)

OK



Photo 32

Windscreen

N/A

Rear Screen

N/A

Arm Rest

OK



Photo 33

<b>Connection Elements</b>	OK
Drive Unit	
<b>Transmission Operation</b>	OK
<b>Transmission Noise &amp; Leaks</b>	OK
<b>Drive Motor Condition</b>	OK
Brake	
<b>Brake Function &amp; Adjustment</b>	OK
Steering	
<b>Steer Motor Operation/Noise</b>	OK
<b>Steering Cylinder</b>	OK
<b>Steer Axle</b>	OK
<b>Steering Wheel/Controls</b>	N/A
Hoist Frame/Load Lifting Device	
<b>Mast To Full Height &amp; Bearings</b>	OK



Photo 34



Photo 35

<b>Forks &amp; Fork Carriage</b>	OK
----------------------------------	----



Photo 36

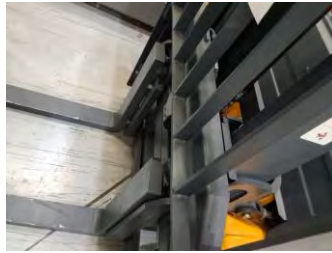


Photo 37

### Lift Chains Free & Secondary

OK



Photo 38

### Hydraulic Cylinder Free Lift

OK

### Hydraulic Cylinders Secondary Light Right & Left

OK

### Hydraulic Hoses Conditions

OK



Photo 39



Photo 40

### Reach Carriage & Cylinder

OK

### Sideshift Carriage & Cylinder

OK

### Tilt Function & Cylinders

OK

### Hydraulic System

#### Valve Block

OK

#### Pump Motor Operation

OK

#### Pump Operation

OK





Hydraulic Function Levers	OK
Electric System	
Multi-pilot & Solo-pilot	OK
Strobe & Working Lights / Alarms	OK
 <p>Photo 41</p>	
Drive Display, Console & Instruments	OK
 <p>Photo 42</p>	
Main Contactor & Connectors	OK
Charger Condition & Operation	N/A
No charger	
Battery	
Battery Condition & Cables	WEAR & TEAR
Battery is dead	
Battery Carriage	OK



Photo 43

### Battery Lock System

OK



Photo 44

### Additions or Attachments

#### Any other related attachments

No

#### Were any issues identified?

Wear & Tear

Replace battery and test hydraulic function and brakes

#### (Internal) Parts required - BE

Replace battery

Media summary



Photo 1



Photo 2



Photo 3



Photo 4





Photo 5



Photo 6



Photo 7



Photo 8



Photo 9



Photo 10





Photo 11



Photo 12





Photo 13



Photo 14



Photo 15



Photo 16



Photo 17



Photo 18





Photo 19



Photo 20





Photo 21



Photo 22



Photo 23



Photo 24

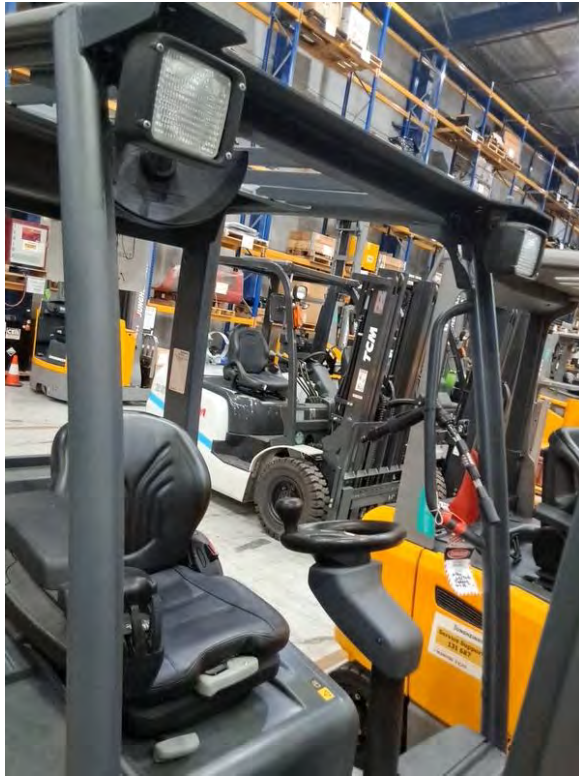


Photo 25



Photo 26





Photo 27



Photo 28





Photo 29



Photo 30



Photo 31



Photo 32



Photo 33



Photo 34





Photo 35



Photo 36



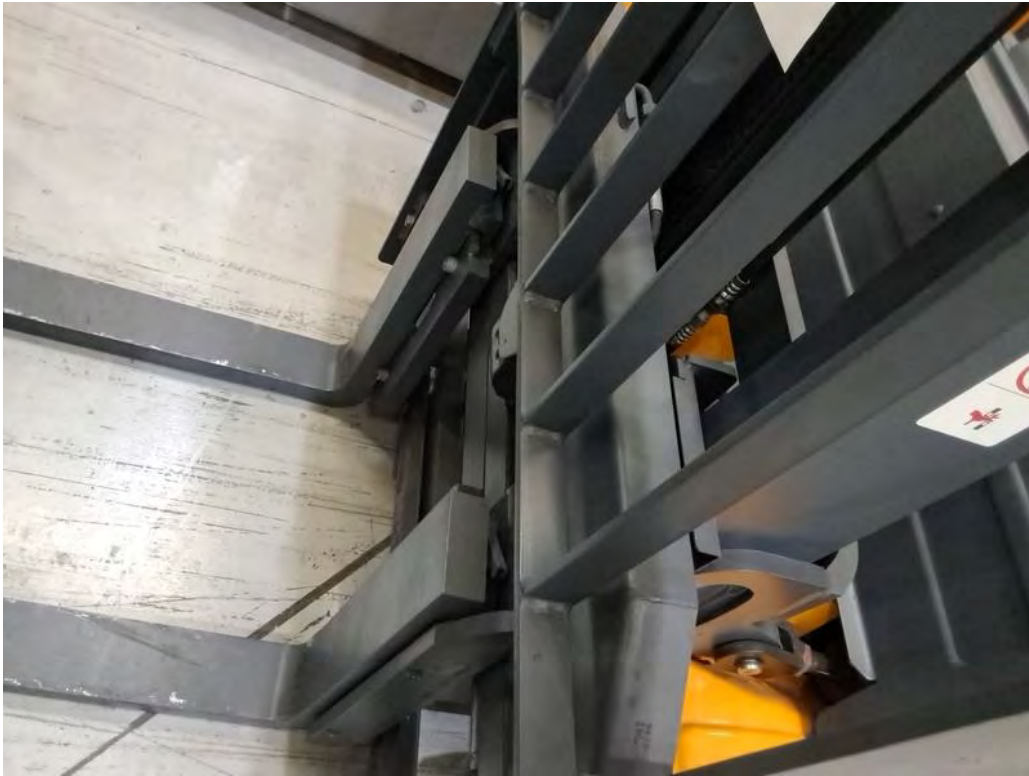


Photo 37



Photo 38



Photo 39



Photo 40



Photo 41



Photo 42





Photo 43



Photo 44