



#### **DISCLAIMER: Second-Hand Plant Condition and Safety**

This document is Jungheinrich Australia Pty Ltd's (Jungheinrich) official notice that the second-hand plant offered for sale through this auction may contain faults or deficiencies that could pose risks to health and safety.

#### **Important Information**

##### **Condition of the Plant**

Given the plant is second-hand, please be aware it may include wear and tear, or be missing safety features that were not present or required at the time of original manufacture.

Jungheinrich has taken all reasonably practicable steps to identify any faults in the plant. The enclosed Condition Report sets out the current condition of this plant, including any identified faults.

Identified specific faults are included in the supplied condition report

##### **Operational Safety Notice**

It is the responsibility of the purchaser to ensure that the plant is inspected, serviced, and, if necessary, modified to meet current safety standards before use. The plant should not be used until all identified faults have been rectified and the equipment is deemed safe for operation.

##### **Manufacturer Information and Records**

Any available records, including:

- information concerning each purpose for which the plant was designed or manufactured;
- information concerning any conditions necessary to ensure that the plant is without risks to health and safety when used for the purposes for which it was designed or manufactured or when carrying out any activity; and
- calculations, analysis or testing records, including data sheets, test certificates, operation manuals, service reports, and safety manuals or guides are enclosed with the plant. Purchasers are encouraged to review this documentation thoroughly

By participating in this auction and purchasing the second-hand plant, the purchaser acknowledges receipt of this notice and accepts full responsibility for ensuring the plant is safe for use.

For any questions please contact Jungheinrich

## De-Hire Inspection Check

31/05/2025 / 383035 / Sydney / UE / Battery Electric / FN539591 /  
Beau Mulquin

Complete

**Serial Number**

FN539591



Photo 1

**Hour Meter Read**

5623 hr

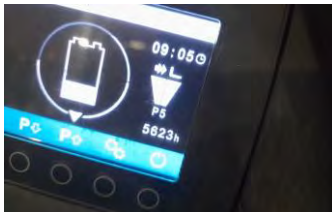


Photo 2

**Service Job No.**

383035

**Location**

Sydney

**Conducted on**

31/05/2025 7:59 AM ACST

**Conducted By**

Beau Mulquin

**Truck Category**

UE

**Truck Make**

Battery Electric

Equipment Exterior

**General Appearance / Paintwork**

WEAR & TEAR

**Include Images of the Front, Rear & Sides of the Unit**



Photo 3



Photo 4



Photo 5



Photo 6



Photo 7

## Wheels/Tyres

### Front Wheels / Tyres

OK



Photo 8



Photo 9

### Rear Wheels / Tyres

OK



Photo 10



Photo 11

### Wheel Bearings

N/A

Unable to check unit doesn't move and no room around

## Chassis/Structure

<b>Overhead Guard</b>	WEAR & TEAR
Scuffs	
<b>Chassis</b>	WEAR & TEAR
Scuffs	
<b>Battery Cover</b>	OK
<b>Driver Seat &amp; Fixing</b>	OK
<b>Panels and Covers (Left &amp; Right)</b>	WEAR & TEAR
Scuffs	
<b>Accessories (Mirrors, Blue Lights)</b>	OK
<b>Windscreen</b>	N/A
<b>Rear Screen</b>	N/A
<b>Arm Rest</b>	OK
<b>Connection Elements</b>	N/A
Unable to check unit doesn't move and no room around	
<b>Drive Unit</b>	
<b>Transmission Operation</b>	N/A
Unable to check unit has error codes	
<b>Transmission Noise &amp; Leaks</b>	N/A
Unable to check unit has error codes	
<b>Drive Motor Condition</b>	N/A
Unable to check unit has error codes	
<b>Brake</b>	
<b>Brake Function &amp; Adjustment</b>	N/A
Unable to check unit has error codes	
<b>Steering</b>	
<b>Steer Motor Operation/Noise</b>	N/A
Unable to check unit has error codes	
<b>Steering Cylinder</b>	N/A
Unable to check unit has error codes	
<b>Steer Axle</b>	N/A
Unable to check unit has error codes	

<b>Steering Wheel/Controls</b>	N/A
Hoist Frame/Load Lifting Device	
<b>Mast To Full Height &amp; Bearings</b>	WEAR & TEAR
<b>Forks &amp; Fork Carriage</b> No tynes fitted, carriage requires side shift bushes	N/A
<b>Lift Chains Free &amp; Secondary</b> 1.8% wear free lift chain	WEAR & TEAR
<b>Hydraulic Cylinder Free Lift</b>	OK
<b>Hydraulic Cylinders Secondary Light Right &amp; Left</b>	OK
<b>Hydraulic Hoses Conditions</b>	OK
<b>Reach Carriage &amp; Cylinder</b>	N/A
<b>Sideshift Carriage &amp; Cylinder</b> Side shift bushes worn	WEAR & TEAR
<b>Tilt Function &amp; Cylinders</b>	OK
Hydraulic System	
<b>Valve Block</b>	OK
<b>Pump Motor Operation</b>	OK
<b>Pump Operation</b>	OK
<b>Hydraulic Function Levers</b> Missing stickers	WEAR & TEAR
	
Photo 12	
Electric System	
<b>Multi-pilot &amp; Solo-pilot</b>	OK
<b>Strobe &amp; Working Lights / Alarms</b>	WEAR & TEAR

Reverse buzzer stuck on

<b>Drive Display, Console &amp; Instruments</b>	OK
<b>Main Contactor &amp; Connectors</b>	N/A
<b>Charger Condition &amp; Operation</b>	N/A
Unable to move unit	
Battery	
<b>Battery Condition &amp; Cables</b>	OK
<b>Battery Carriage</b>	OK
<b>Battery Lock System</b>	OK
Additions or Attachments	
<b>Any other related attachments</b>	No
<b>Were any issues identified?</b>	Wear & Tear
<b>(Internal) Parts required - BE</b>	
Error codes	
Tyres	
Free lift chain	
Paint work	



Media summary



Photo 1



Photo 2



Photo 3



Photo 4





Photo 5



Photo 6

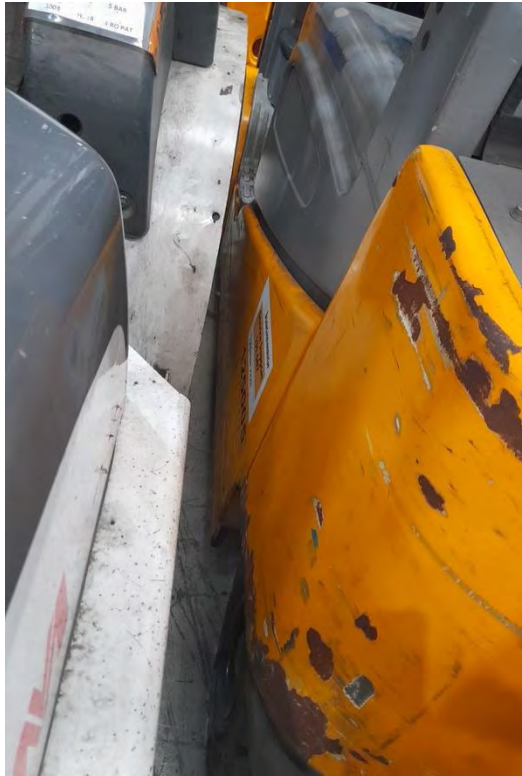


Photo 7



Photo 8



Photo 9



Photo 10





Photo 11



Photo 12