



DISCLAIMER: Second-Hand Plant Condition and Safety

This document is Jungheinrich Australia Pty Ltd's (**Jungheinrich**) official notice that the second-hand plant offered for sale through this transaction (direct sale or auction) may contain faults or deficiencies that could pose risks to health and safety.

Important Information

Safety & Compliance of the Plant

Given the plant is second-hand, please be aware it may include wear and tear, or be missing safety features that were not present or required at the time of original manufacture.

Jungheinrich has taken all reasonably practicable steps to identify any faults in the plant. The **enclosed Condition Report** sets out the current condition of this plant, including any identified faults.

While all efforts have been made to identify faults, there may be other faults present that did not show up at time of inspection

Operational Safety Notice

The plant should not be used until all identified faults have been rectified and the equipment is deemed safe for operation.

It is the responsibility of the purchaser to ensure that the plant is inspected, serviced, and, if necessary, modified to meet current safety standards before use.

By participating in this sale and purchasing the second-hand plant, the purchaser acknowledges receipt of this notice and accepts full responsibility for ensuring the plant is safe for use.

Operating condition of the plant

Note: this condition report is a safety report only and does not represent overall appearance or operating condition of the plant

For any questions please contact Jungheinrich



Used Sale Safety & Compliance Check

MHE-000295 / 124587 / Melbourne Service / 27/04/2026 /
Jungheinrich / EFG 320

Complete

Flagged items	0
Report ID	MHE-000295
Technician Name	Melbourne Service
Conducted on	27/04/2026 8:28 AM AEST
Branch	Melbourne
Unit Details	
Equipment No.	124587
Brand	Jungheinrich
Model	EFG 320
Mast ID	4400mm

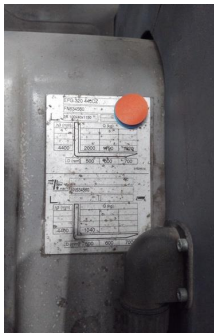


Photo 1

Include Images of the Front, Rear & Sides of the Unit



Photo 2



Photo 3



Photo 4



Photo 5



Photo 6



Photo 7

Observations Summary

Truck Category

Category 3 - Electric Counterbalance

Emergency Stop, Horn/Warning device, lights, reverse alarm and flashing lights operational

Yes

Seat switch and seat belt switch fitted to check presence of operator & working in sequence?

Yes

Seat is secure and seat belt is in serviceable condition?

Yes



Photo 8

Mast switch operation for travel speed reduction to 3kmh above specified height

Yes

Are brakes and park brake functioning correctly?

Yes

Are tyre treads within limits and/or free from damage?

Yes

Are fork tynes in good condition and within specification?

N/A

Carpet spike

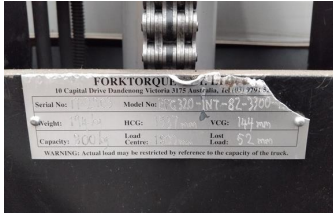


Photo 9



Photo 10

Are mast chains in good condition, within specification and working correctly?

Yes

Are all controls inc. lift, tilt & sideshift/auxilliary functions working correctly

No

Light button is not working.



Photo 11

Confirm safety systems not bypassed or malfunctioning?

Yes

Additional Observations & Actions

List any other notable defects or faults e.g. ROPS/FOPS damage etc.

- Left hand rims is bent.
- Free lift cylinder gland nut leaking oil.



Photo 12



Photo 13

Technician Sign off



David Nguyen
27/04/2026 9:38 AM AEST

Media summary

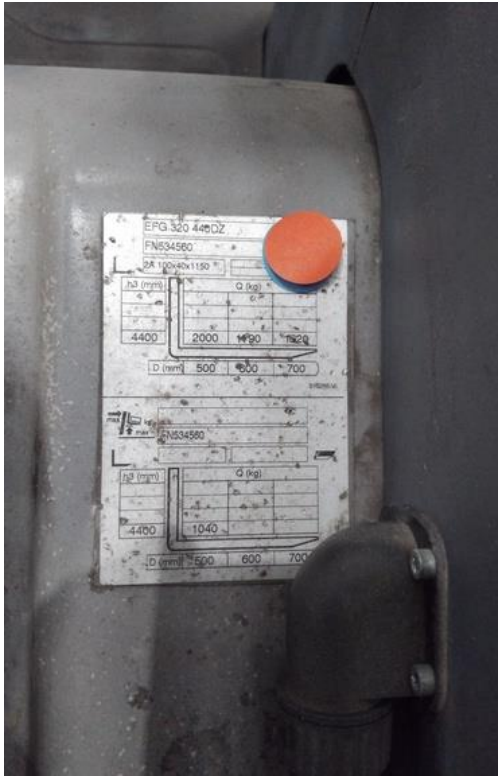


Photo 1



Photo 2



Photo 3



Photo 4



Photo 5



Photo 6



Photo 7



Photo 8

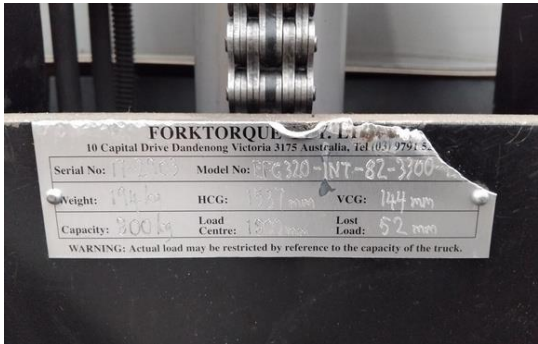


Photo 9



Photo 10



Photo 11



Photo 12



Photo 13