



DISCLAIMER: Second-Hand Plant Condition and Safety

This document is Jungheinrich Australia Pty Ltd's (**Jungheinrich**) official notice that the second-hand plant offered for sale through this transaction (direct sale or auction) may contain faults or deficiencies that could pose risks to health and safety.

Important Information

Safety & Compliance of the Plant

Given the plant is second-hand, please be aware it may include wear and tear, or be missing safety features that were not present or required at the time of original manufacture.

Jungheinrich has taken all reasonably practicable steps to identify any faults in the plant. The **enclosed** Condition Report sets out the current condition of this plant, including any identified faults.

While all efforts have been made to identify faults, there may be other faults present that did not show up at time of inspection

Operational Safety Notice

The plant should not be used until all identified faults have been rectified and the equipment is deemed safe for operation.

It is the responsibility of the purchaser to ensure that the plant is inspected, serviced, and, if necessary, modified to meet current safety standards before use.

By participating in this sale and purchasing the second-hand plant, the purchaser acknowledges receipt of this notice and accepts full responsibility for ensuring the plant is safe for use.

Operating condition of the plant

Note: this condition report is a safety report only and does not represent overall appearance or operating condition of the plant

For any questions please contact Jungheinrich



Used Sale Safety & Compliance Check

MHE-000153 / 131386 / Udesch Ganepola / 21/01/2026 / Jungheinrich
/ EFG218

Complete

| | |
|-----------------|--------------------------|
| Flagged items | 0 |
| Report ID | MHE-000153 |
| Technician Name | Udesch Ganepola |
| Conducted on | 21/01/2026 11:46 AM ACDT |
| Branch | Adelaide |
| Unit Details | |
| Equipment No. | 131386 |
| Brand | Jungheinrich |
| Model | EFG218 |

Include Images of the Front, Rear & Sides of the Unit

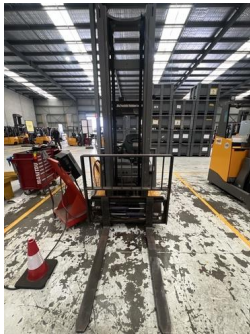


Photo 1

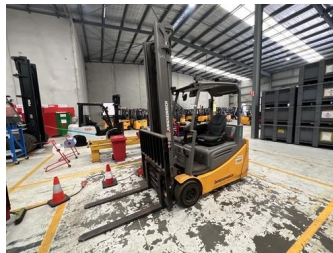


Photo 2

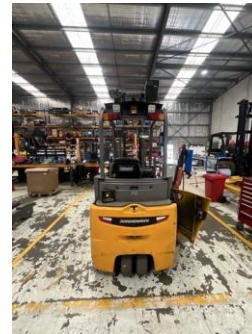


Photo 3



Photo 4

Observations Summary






| Truck Category | Category 3 - Electric Counterbalance |
|---|--------------------------------------|
| Emergency Stop, Horn/Warning device, lights, reverse alarm and flashing lights operational | Yes |
| Seat switch and seat belt switch fitted to check presence of operator & working in sequence? | Yes |
| Seat is secure and seat belt is in serviceable condition? | Yes |
| Mast switch operation for travel speed reduction to 3kmh above specified height | Yes |
| Are brakes and park brake functioning correctly? | Yes |
| Are tyre treads within limits and/or free from damage? | Yes |
| <div>    </div> <div> <div>Photo 5</div> <div>Photo 6</div> <div>Photo 7</div> </div> | |
| Are fork tyres in good condition and within specification? | Yes |
| <div>   </div> <div> <div>Photo 8</div> <div>Photo 9</div> </div> | |
| Are mast chains in good condition, within specification and working correctly? | Yes |



Photo 10



Photo 11

Are all controls inc. lift, tilt & sideshift/auxilliary functions working correctly

Yes

Confirm safety systems not bypassed or malfunctioning?

Yes

Additional Observations & Actions

List any other notable defects or faults e.g. ROPS/FOPS damage etc.

Technician Sign off

Udes Ganepola
21/01/2026 11:51 AM ACDT

No charger available with the unit.

This unit has seen safety management system installed with floor lamps. (Informed supervisor)

Media summary

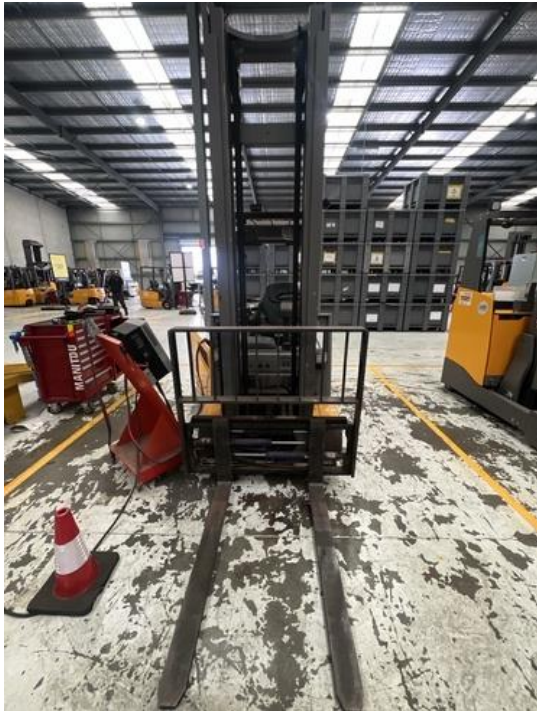


Photo 1



Photo 2



Photo 3



Photo 4



Photo 5



Photo 6



Photo 7



Photo 8



Photo 9



Photo 10



Photo 11