



DISCLAIMER: Second-Hand Plant Condition and Safety

This document is Jungheinrich Australia Pty Ltd's (**Jungheinrich**) official notice that the second-hand plant offered for sale through this transaction (direct sale or auction) may contain faults or deficiencies that could pose risks to health and safety.

Important Information

Safety & Compliance of the Plant

Given the plant is second-hand, please be aware it may include wear and tear, or be missing safety features that were not present or required at the time of original manufacture.

Jungheinrich has taken all reasonably practicable steps to identify any faults in the plant. The **enclosed** Condition Report sets out the current condition of this plant, including any identified faults.

While all efforts have been made to identify faults, there may be other faults present that did not show up at time of inspection

Operational Safety Notice

The plant should not be used until all identified faults have been rectified and the equipment is deemed safe for operation.

It is the responsibility of the purchaser to ensure that the plant is inspected, serviced, and, if necessary, modified to meet current safety standards before use.

By participating in this sale and purchasing the second-hand plant, the purchaser acknowledges receipt of this notice and accepts full responsibility for ensuring the plant is safe for use.

Operating condition of the plant

Note: this condition report is a safety report only and does not represent overall appearance or operating condition of the plant

For any questions please contact Jungheinrich



Used Sale Safety & Compliance Check

MHE-000162 / 126839 - 2B530666 / Oluwatobi Olagbegi /
22/01/2026 / TCM / FG25T3

Complete

Flagged items

0

Report ID

MHE-000162

Technician Name

Oluwatobi Olagbegi

Conducted on

22/01/2026 10:41 AM ACDT

Branch

Adelaide

Unit Details

Equipment No.

126839 - 2B530666



Photo 1



Photo 2



Photo 3



Photo 4



Photo 5



Photo 6

Brand

TCM

Model

FG25T3

Mast ID

VM500-2N5 / 202072

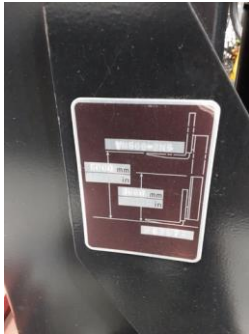


Photo 7

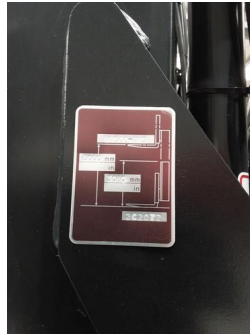


Photo 8

Include Images of the Front, Rear & Sides of the Unit

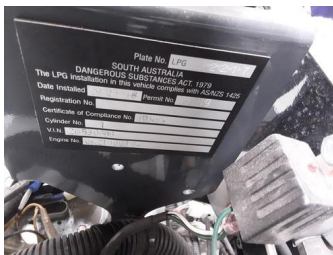


Photo 9



Photo 10



Photo 11



Photo 12

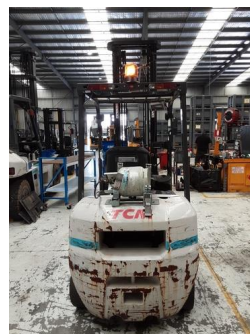


Photo 13

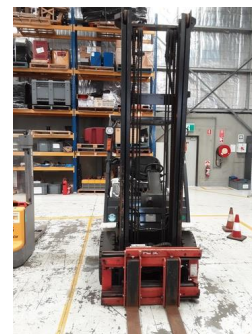


Photo 14

Observations Summary

Truck Category

Category 4 - IC Counterbalance

Seat switch and seat belt switch fitted to check presence of operator & working in sequence?

Yes

Emergency Stop (if fitted), Horn/Warning device, lights, reverse alarm and flashing lights operational

Yes

Are brakes and park brake functioning correctly?

Yes

Are tyre treads within limits and/or free from damage?

Yes



Photo 15



Photo 16

Are fork tynes in good condition and within specification?

Yes

Are mast chains in good condition, within specification and working correctly?

Yes

Are all controls inc. lift, tilt & sideshift/auxilliary functions working correctly

Yes



Photo 17

Confirm safety systems not bypassed or malfunctioning?

Yes

Additional Observations & Actions

List any other notable defects or faults e.g. ROPS/FOPS damage etc.



Photo 18

Technician Sign off



oluwatobi
22/01/2026 11:01 AM ACDT

Media summary



Photo 1



Photo 2



Photo 3



Photo 4



Photo 5



Photo 6

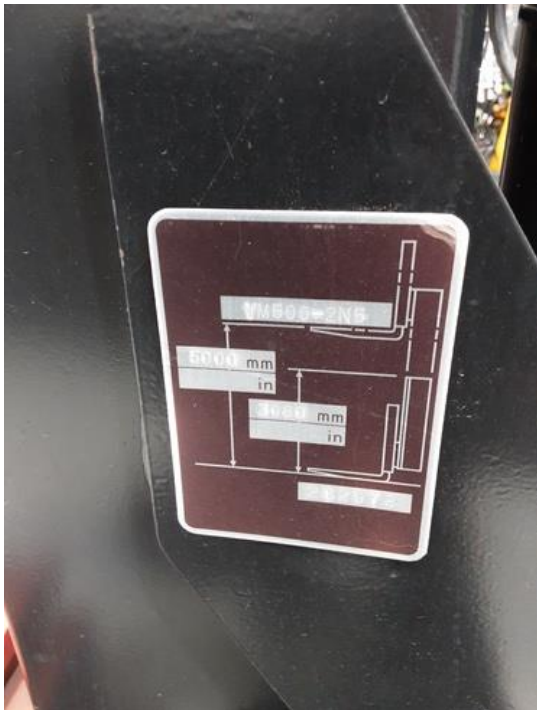


Photo 7

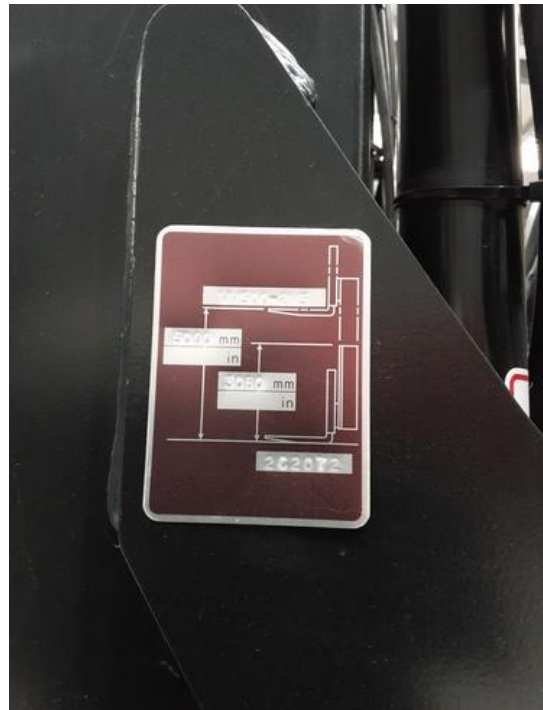


Photo 8

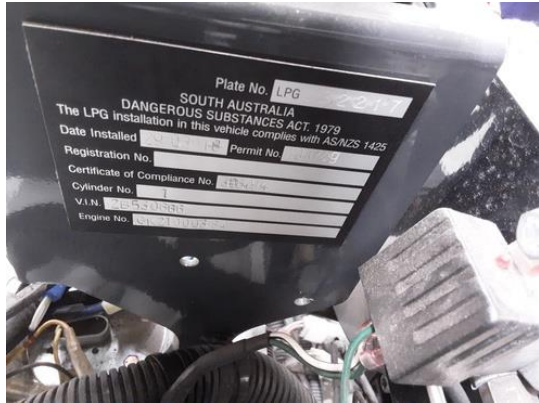


Photo 9



Photo 10



Photo 11



Photo 12



Photo 13



Photo 14



Photo 15



Photo 16



Photo 17



Photo 18