



## **DISCLAIMER: Second-Hand Plant Condition and Safety**

This document is Jungheinrich Australia Pty Ltd's (**Jungheinrich**) official notice that the second-hand plant offered for sale through this transaction (direct sale or auction) may contain faults or deficiencies that could pose risks to health and safety.

### **Important Information**

#### **Safety & Compliance of the Plant**

Given the plant is second-hand, please be aware it may include wear and tear, or be missing safety features that were not present or required at the time of original manufacture.

Jungheinrich has taken all reasonably practicable steps to identify any faults in the plant. The **enclosed** Condition Report sets out the current condition of this plant, including any identified faults.

While all efforts have been made to identify faults, there may be other faults present that did not show up at time of inspection

#### **Operational Safety Notice**

The plant should not be used until all identified faults have been rectified and the equipment is deemed safe for operation.

It is the responsibility of the purchaser to ensure that the plant is inspected, serviced, and, if necessary, modified to meet current safety standards before use.

By participating in this sale and purchasing the second-hand plant, the purchaser acknowledges receipt of this notice and accepts full responsibility for ensuring the plant is safe for use.

#### **Operating condition of the plant**

Note: this condition report is a safety report only and does not represent overall appearance or operating condition of the plant

For any questions please contact Jungheinrich



## Used Sale Safety & Compliance Check

MHE-000180 / 126838 / Indrajith Bandara / 27/01/2026 / TCM / FG25T3

Complete

Flagged items	0
Report ID	MHE-000180
Technician Name	Indrajith Bandara
Conducted on	27/01/2026 12:35 PM ACDT
Branch	Adelaide
Unit Details	
Equipment No.	126838
Brand	TCM
Model	FG25T3
Mast ID	VM500=2N5

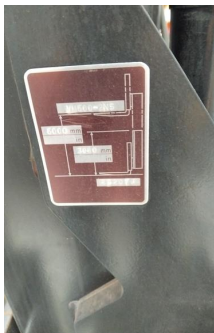


Photo 1

Include Images of the Front, Rear & Sides of the Unit



Photo 2



Photo 3



Photo 4



Photo 5



Photo 6



Photo 7



Photo 8



Photo 9

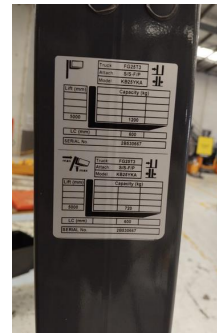


Photo 10



Photo 11

## Observations Summary

### Truck Category

Category 4 - IC Counterbalance

Seat switch and seat belt switch fitted to check presence of operator & working in sequence?

Yes

<b>Emergency Stop (if fitted), Horn/Warning device, lights, reverse alarm and flashing lights operational</b>	Yes
<b>Are brakes and park brake functioning correctly?</b>	Yes
<b>Are tyre treads within limits and/or free from damage?</b>	Yes
<b>Are fork tynes in good condition and within specification?</b>	Yes
<b>Are mast chains in good condition, within specification and working correctly?</b>	Yes
<b>Are all controls inc. lift, tilt &amp; sideshift/auxilliary functions working correctly</b>	Yes
<b>Confirm safety systems not bypassed or malfunctioning?</b>	Yes
Additional Observations & Actions	

**Technician Sign off**



Indrajith Bandara  
27/01/2026 12:43 PM ACDT

Media summary

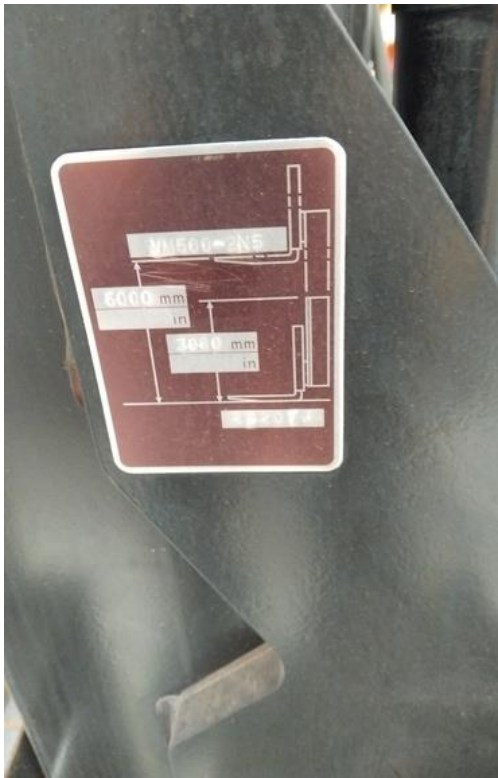


Photo 1



Photo 2



Photo 3



Photo 4





Photo 5



Photo 6



Photo 7



Photo 8



Photo 9

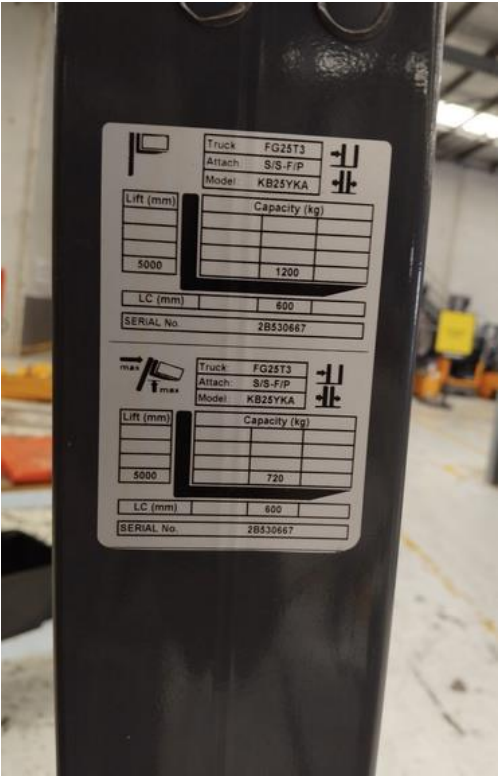


Photo 10



Photo 11