



## **DISCLAIMER: Second-Hand Plant Condition and Safety**

This document is Jungheinrich Australia Pty Ltd's (**Jungheinrich**) official notice that the second-hand plant offered for sale through this transaction (direct sale or auction) may contain faults or deficiencies that could pose risks to health and safety.

### **Important Information**

#### **Safety & Compliance of the Plant**

Given the plant is second-hand, please be aware it may include wear and tear, or be missing safety features that were not present or required at the time of original manufacture.

Jungheinrich has taken all reasonably practicable steps to identify any faults in the plant. The **enclosed** Condition Report sets out the current condition of this plant, including any identified faults.

While all efforts have been made to identify faults, there may be other faults present that did not show up at time of inspection

#### **Operational Safety Notice**

The plant should not be used until all identified faults have been rectified and the equipment is deemed safe for operation.

It is the responsibility of the purchaser to ensure that the plant is inspected, serviced, and, if necessary, modified to meet current safety standards before use.

By participating in this sale and purchasing the second-hand plant, the purchaser acknowledges receipt of this notice and accepts full responsibility for ensuring the plant is safe for use.

#### **Operating condition of the plant**

Note: this condition report is a safety report only and does not represent overall appearance or operating condition of the plant

For any questions please contact Jungheinrich



**Complete**

Equipment No.	124192
---------------	--------

Mast ID GE210\_310zz

MHE-000117 / 124192 / Lucas Skinner / 24/12/2025 / Jungheinrich / EFG218K



Photo 3



Photo 4



Photo 5



Photo 6

## Observations Summary

### Truck Category

Category 3 - Electric  
Counterbalance



Photo 7



Photo 8







Photo 9



Photo 10

Emergency Stop, Horn/Warning device, lights, reverse alarm  
and flashing lights operational

Yes

Seat switch and seat belt switch fitted to check presence of operator & working in sequence?	Yes
Seat is secure and seat belt is in serviceable condition?	Yes
Mast switch operation for travel speed reduction to 3kmh above specified height	Yes
Are brakes and park brake functioning correctly?	Yes
Are tyre treads within limits and/or free from damage?	No
<div>    </div> <div> <div>Photo 11</div> <div>Photo 12</div> <div>Photo 13</div> </div>	
Are fork tyres in good condition and within specification?	Yes
<div>  </div> <div>Photo 14</div>	
Are mast chains in good condition, within specification and working correctly?	Yes
Are all controls inc. lift, tilt & sideshift/auxilliary functions working correctly	Yes
Confirm safety systems not bypassed or malfunctioning?	Yes
Additional Observations & Actions	

List any other notable defects or faults e.g. ROPS/FOPS damage etc.

Charger not tested, Fitted with euro plug.

Forklift fitted with aftermarket battery



Photo 15

---

### Technician Sign off

A handwritten signature in black ink, appearing to be 'L. Skinner', on a light gray background.

Lucas skinner  
24/12/2025 9:50 AM AEDT



# Media summary

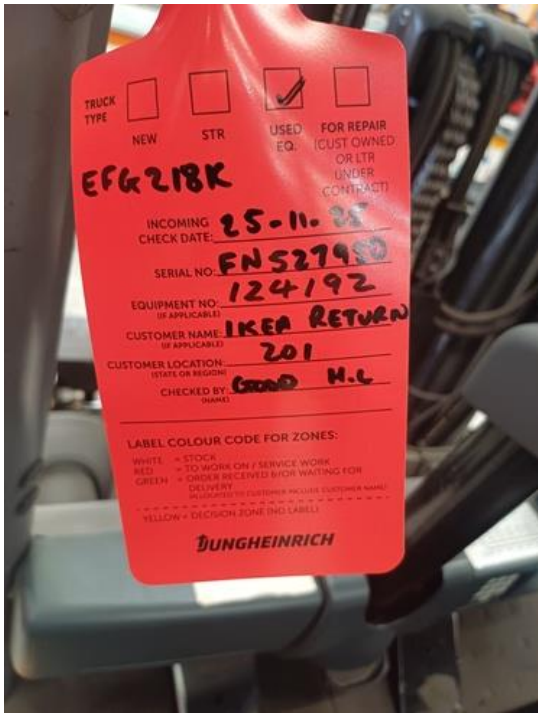


Photo 1



Photo 2



Photo 3



Photo 4



Photo 5



Photo 6



Photo 7



Photo 8





Photo 9



Photo 10



Photo 11



Photo 12





Photo 13



Photo 14



Photo 15