



DISCLAIMER: Second-Hand Plant Condition and Safety

This document is Jungheinrich Australia Pty Ltd's (**Jungheinrich**) official notice that the second-hand plant offered for sale through this transaction (direct sale or auction) may contain faults or deficiencies that could pose risks to health and safety.

Important Information

Safety & Compliance of the Plant

Given the plant is second-hand, please be aware it may include wear and tear, or be missing safety features that were not present or required at the time of original manufacture.

Jungheinrich has taken all reasonably practicable steps to identify any faults in the plant. The **enclosed** Condition Report sets out the current condition of this plant, including any identified faults.

While all efforts have been made to identify faults, there may be other faults present that did not show up at time of inspection

Operational Safety Notice

The plant should not be used until all identified faults have been rectified and the equipment is deemed safe for operation.

It is the responsibility of the purchaser to ensure that the plant is inspected, serviced, and, if necessary, modified to meet current safety standards before use.

By participating in this sale and purchasing the second-hand plant, the purchaser acknowledges receipt of this notice and accepts full responsibility for ensuring the plant is safe for use.

Operating condition of the plant

Note: this condition report is a safety report only and does not represent overall appearance or operating condition of the plant

For any questions please contact Jungheinrich



Used Sale Safety & Compliance Check

MHE-000147 / 122789 / Udesch Ganepola / 21/01/2026 / Jungheinrich
/ EFG216kn

Complete

Flagged items

0

Report ID

MHE-000147

Technician Name

Udesch Ganepola

Conducted on

21/01/2026 9:07 AM ACDT

Branch

Adelaide

Unit Details

Equipment No.

122789

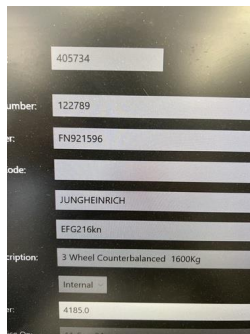


Photo 1

Brand

Jungheinrich

Model

EFG216kn



Photo 2



Photo 3



Photo 4

Include Images of the Front, Rear & Sides of the Unit



Photo 5

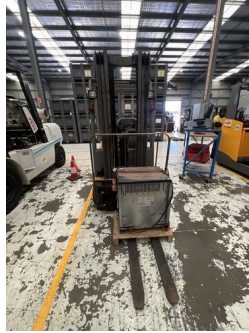


Photo 6



Photo 7



Photo 8



Photo 9



Photo 10

Observations Summary	
Truck Category	Category 3 - Electric Counterbalance
Emergency Stop, Horn/Warning device, lights, reverse alarm and flashing lights operational	Yes
Seat switch and seat belt switch fitted to check presence of operator & working in sequence?	Yes
Seat is secure and seat belt is in serviceable condition?	Yes
Mast switch operation for travel speed reduction to 3kmh above specified height	Yes
Are brakes and park brake functioning correctly?	Yes
Are tyre treads within limits and/or free from damage?	Yes



Photo 11



Photo 12



Photo 13

Are fork tynes in good condition and within specification?	Yes
---	-----

Good and bit rusted



Photo 14

Are mast chains in good condition, within specification and working correctly?

Yes



Photo 15



Photo 16

Are all controls inc. lift, tilt & sideshift/auxilliary functions working correctly

Yes



Photo 17

Confirm safety systems not bypassed or malfunctioning?

Yes

Additional Observations & Actions

List any other notable defects or faults e.g. ROPS/FOPS damage etc.



Photo 18



Photo 19

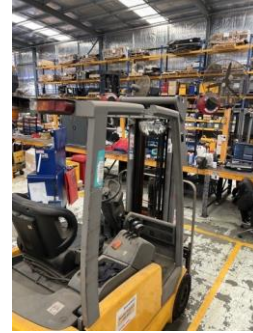


Photo 20

Technician Sign off

A handwritten signature in black ink, appearing to be 'Udesch Ganepola'.

Udesch Ganepola
21/01/2026 9:31 AM ACDT



Photo 21



Photo 22



Photo 23



Photo 24



Photo 25

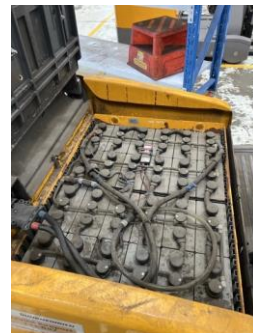


Photo 26



Photo 27

Media summary

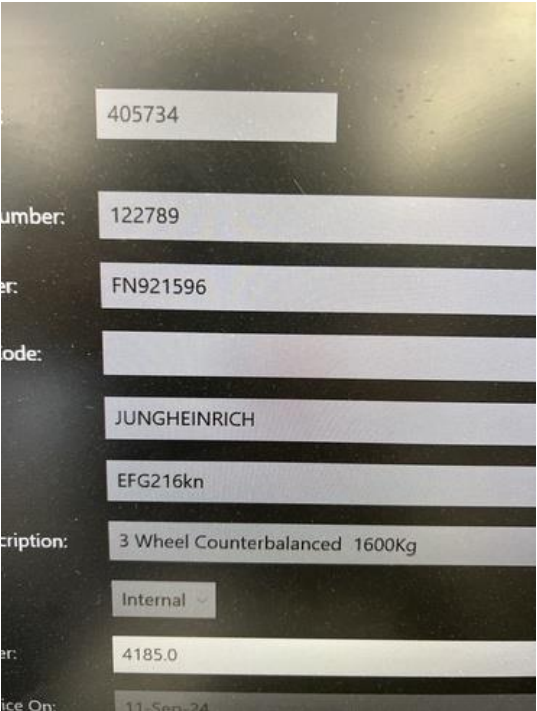


Photo 1



Photo 2



Photo 3



Photo 4



Photo 5



Photo 6



Photo 7



Photo 8



Photo 9



Photo 10



Photo 11



Photo 12



Photo 13



Photo 14



Photo 15

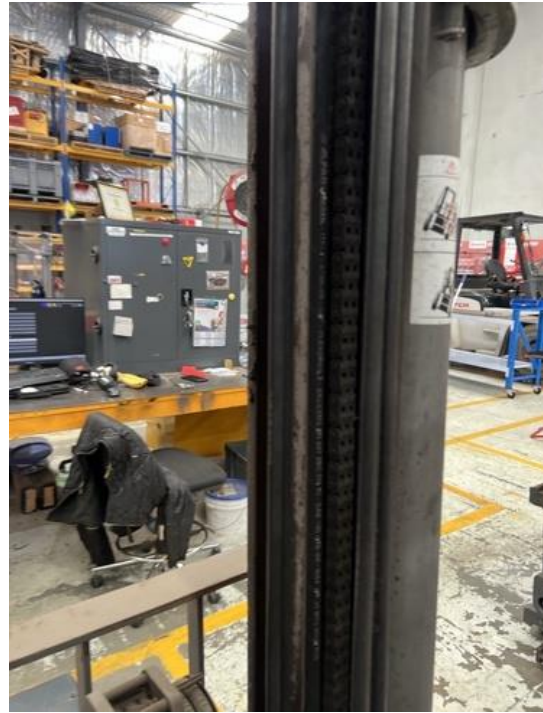


Photo 16



Photo 17



Photo 18



Photo 19



Photo 20



Photo 21



Photo 22



Photo 23



Photo 24

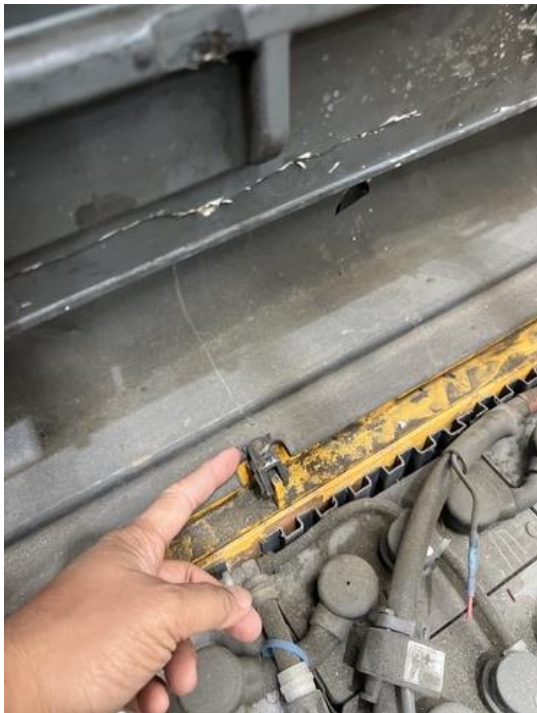


Photo 25



Photo 26



Photo 27